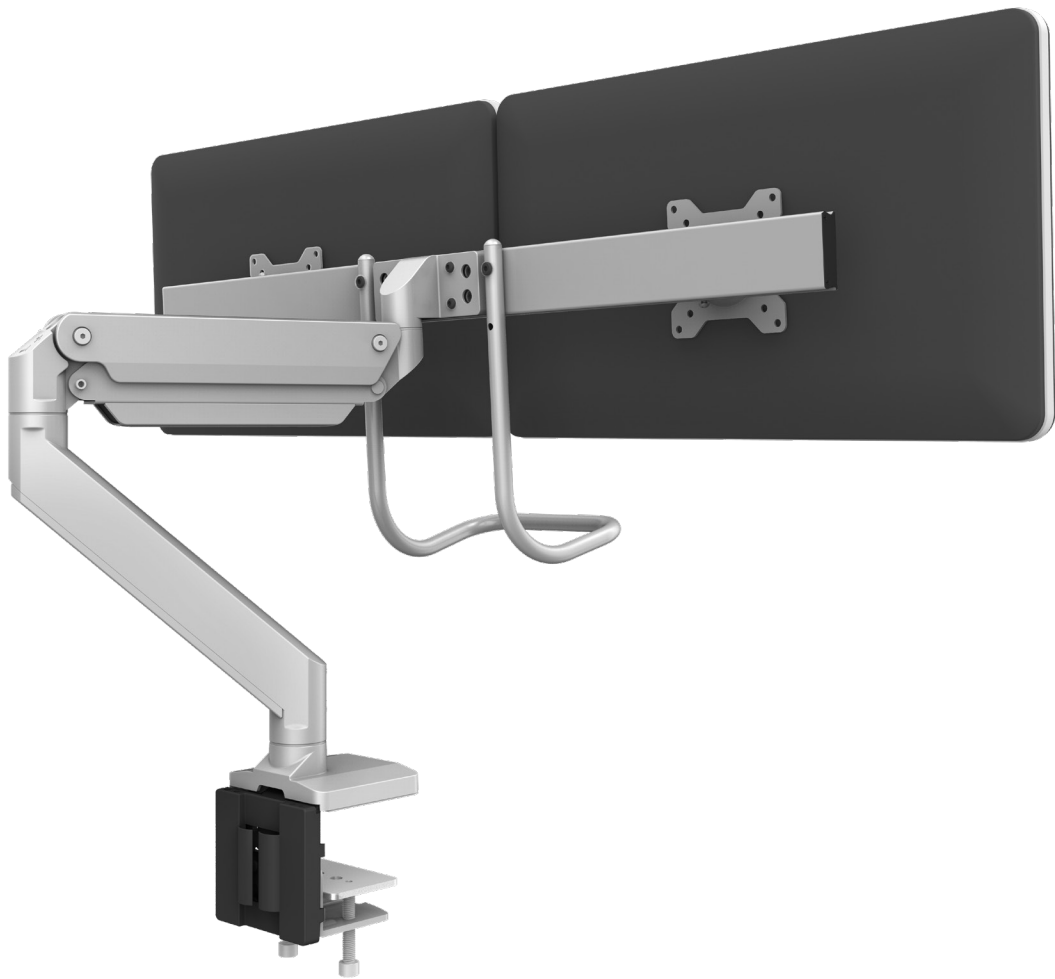


esi



Eppa2-Max

Dual Monitor Arm
with Crossbar

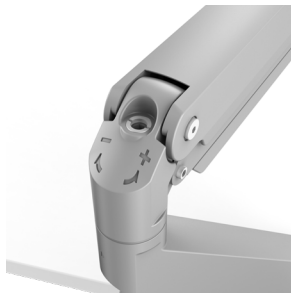
Eppa2-Max

Dual Monitor Arm with Crossbar

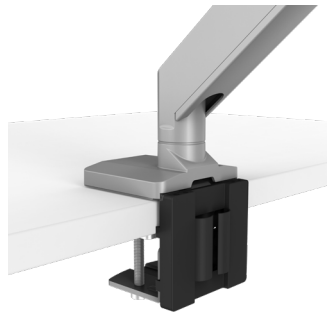
esi



Crossbar handle allows easy repositioning of the monitors



Adjustable Gas Spring for easy adjustability no matter the weight



Clip-on tool holder attaches to base bracket keeping hex keys accessible

Product specs

- Gas Spring mechanism for smooth and effortless adjustments
- Recommended for worksurfaces 24.0" - 36.0" deep or less
- Crossbar handle provides an easy grip for moving monitors
- 180° lock-out feature
- 28.6" total width of crossbar
- 12.9" height adjustment range - 10.4"-23.4" (low/high)
- 20.7" arm extension
- 4.1" arm retraction
- $\pm 10^\circ$ monitor tilt
- $\pm 90^\circ$ VESA rotation
- Total weight capacity: 35.2 lbs.
- Desk clamp and grommet mount included
- 30.0" max. monitor width
Bezel measured left to right.
Max. width is contingent on weight capacity.
- Capable to swivel between portrait and landscape orientation
- Meets or exceeds BIFMA x5.5 and CSA CAN/CGSB44.227 guidelines
- Aluminum and steel design
- Partially assembled for quick installation
- Integrated cord management
- Grommet hole integrated in base to easily route cables
- Clip-on tool holder attaches to base bracket keeping hex keys accessible

Warranty: 10 yr.

Model

○ EPPA2-MAX-SLV

Eppa2-Max

Dual Monitor Arm with Crossbar

esi

