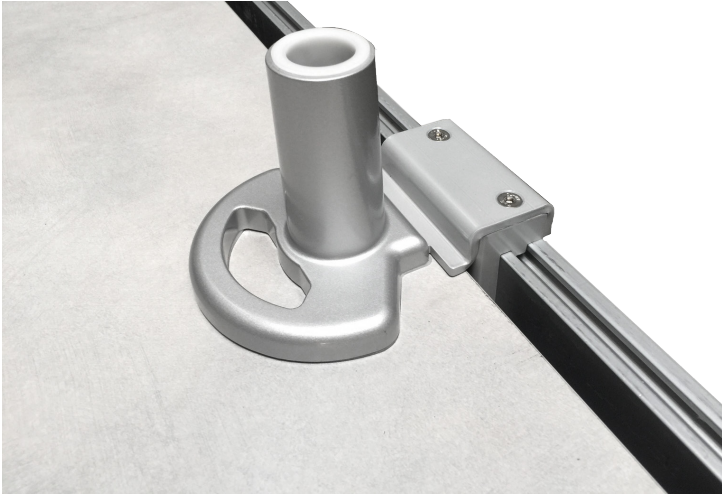


# Benching Solutions

Steelcase® C:SCAPE monitor arm benching adapter

# Benching Solutions

Steelcase® C:SCAPE monitor arm benching adapter



## Product Specs

---

- Designed to combine ESI monitor arms with the Steelcase C:SCAPE benching table
- Compatible ESI monitor arms:
  - Evolve monitor arms: single, dual and triple configurations only
  - Edge®: single and dual
- Holds up to three monitors
  - 15.4 lbs. per slider mount arm
  - 17.6 lbs. per VESA mount
- Fits easily on standard Edge/Evolve product nesting on base
- Pole sold separately
- Warranty: 15 yrs.



## Model #

---

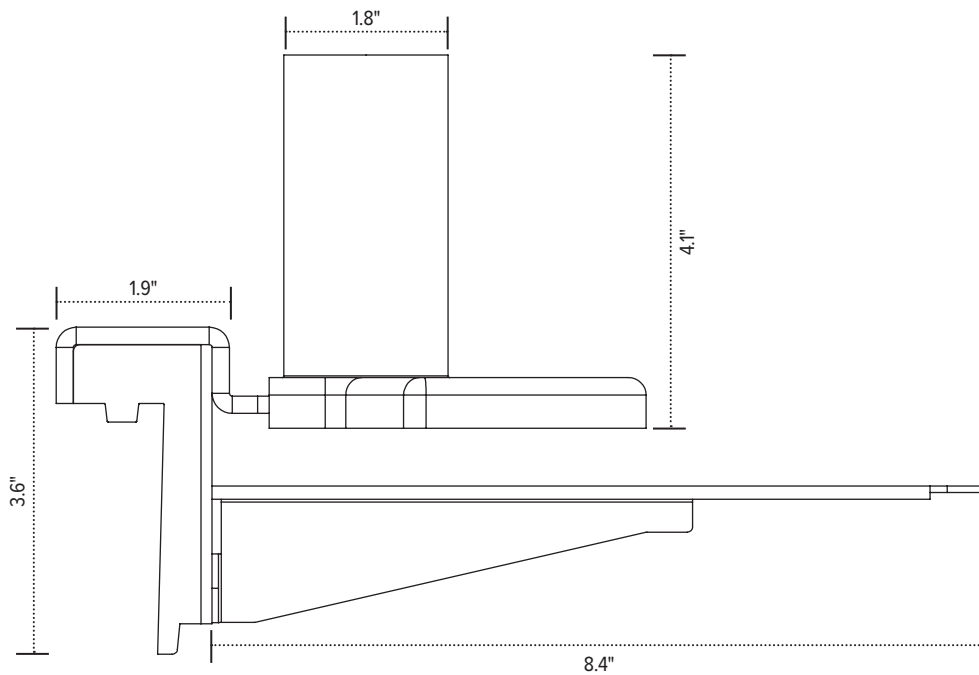
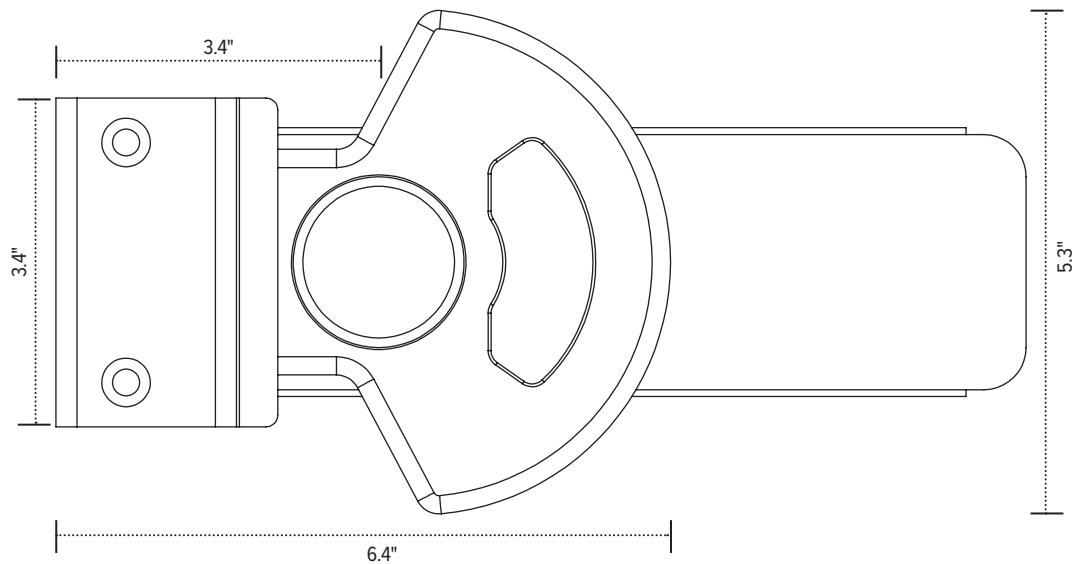
- ☐ E-CMT-SLV

esi

800.833.3746  
esiergo.com

# Benching Solutions

Steelcase® C:SCAPE monitor arm benching adapter



esi

800.833.3746  
esiergo.com