



All-Flex[®] 2-leg

electric table base

All-Flex 2-leg

electric table base

top support at 19.3"



top support at 23.3"



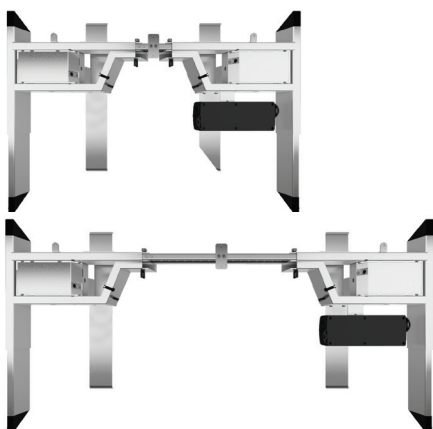
foot at 28.0"



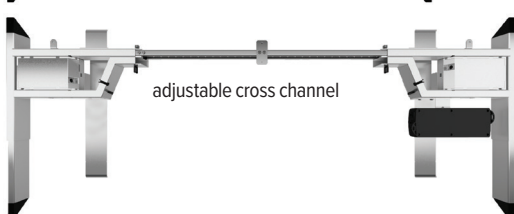
foot at 22.0"



top views of
notched cross channel



adjustable cross channel



Product Specs

- Electric height adjustment
- 265lbs. base lifting capacity
- 1.5"/sec adjustment speed
- One part number for all 2-leg sizes
- 26.0" height adjustment range
 - 23.2"–49.2" (low/high)
(excluding worksurface)
- Three-stage adjustable legs
- Provides adjustable cross channels, top support, and feet making it one of the most adjustable table bases on the market
- Foot is adjustable to 22.0" or 28.0" (patented design)
- Adjustable width frame to fit worksurfaces 36.0"–84.0" wide
- Adjustable depth top support expands to accommodate worksurfaces 24.0"–36.0" deep
- Notched cross channel offers ample space for keyboard tray glide tracks
- 86.0" power cord
- Digital keypad with four memory settings
- Anti-collision safety feature
- Quickstart
- Crossbar includes guide markings to assist in setting width
- Folding frame design for quick assembly
- Integrated control unit shelf
- Integrated storage for foot extension plate when not in use
- Integrated cable management
- Quiet adjustment
- Steel construction
- Low standby power consumption
- Table base is UL962 listed
- Lead-free
- Two motors
- ADA compliant
- Locking casters are available
- Warranty: 15yrs. structural / 7yrs. mechanical

Available base finishes

- Silver -SLV
- LT Black -BLK
- LT White -WHT

LT=CALL FOR ON HAND AVAILABILITY



digital keypad

Caster Kit

- Set of casters for table bases
- Increases height by 2.0"
- Locking casters for security

MODEL # CASTERKIT-FLEX2 \$70




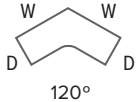
locking casters

esi

800.833.3746
esiergo.com

All-Flex 2-leg

electric table base

Table bases		Available worksurfaces				
Table base model	List price	Worksurface shape	Worksurface dimension	TFL Quick ship	TFL Standard	HPL Standard
FLEX2-___	\$1,645	 Rectangle	36"w x 24"d	—	2R3624-TFL-__ \$195	2R3624-HPL-__ \$273
			42"w x 24"d	—	2R4224-TFL-__ \$220	2R4224-HPL-__ \$315
			48"w x 24"d	2R4824-QS-TFL-__ \$250	2R4824-TFL-__ \$250	2R4824-HPL-__ \$350
			60"w x 24"d	—	2R6024-TFL-__ \$300	2R6024-HPL-__ \$420
			72"w x 24"d	—	2R7224-TFL-__ \$375	2R7224-HPL-__ \$460
			84"w x 24"d	—	2R8424-TFL-__ \$420	2R8424-HPL-__ \$500
			36"w x 30"d	—	2R3630-TFL-__ \$210	2R3630-HPL-__ \$300
			42"w x 30"d	—	2R4230-TFL-__ \$230	2R4230-HPL-__ \$330
			48"w x 30"d	—	2R4830-TFL-__ \$275	2R4830-HPL-__ \$380
			60"w x 30"d	2R6030-QS-TFL-__ \$350	2R6030-TFL-__ \$350	2R6030-HPL-__ \$440
			72"w x 30"d	—	2R7230-TFL-__ \$400	2R7230-HPL-__ \$480
Table base model	List price	Worksurface shape	Worksurface dimension	TFL Quick ship	TFL Standard	HPL Standard
FLEX2-___	\$1,645	 120°	48"w x 24"d	—	120-4824-TFL-__ \$815	120-4824-HPL-__ \$1,141
			60"w x 24"d	—	—	120-6024-HPL-__ \$1,605
			72"w x 24"d	—	—	120-7224-HPL-__ \$1,800
			48"w x 30"d	—	—	120-4830-HPL-__ \$1,295
			60"w x 30"d	—	—	120-6030-HPL-__ \$1,625
			72"w x 30"d	—	—	120-7230-HPL-__ \$1,825

Worksurface Program

Multiple worksurface shapes and laminates are available. See the Complete Table & Worksurface Ordering Guide for worksurface details including pricing and laminate colors. TFL Quick ship worksurfaces are shipped out in 48 hours, TFL and HPL Standard worksurfaces ship in 2–3 weeks.

Table bases and worksurfaces can be purchased independently or as a combination.

ESI table bases and worksurfaces are made to exact dimensions. If nominal sizing is needed, please specify when ordering.

esi

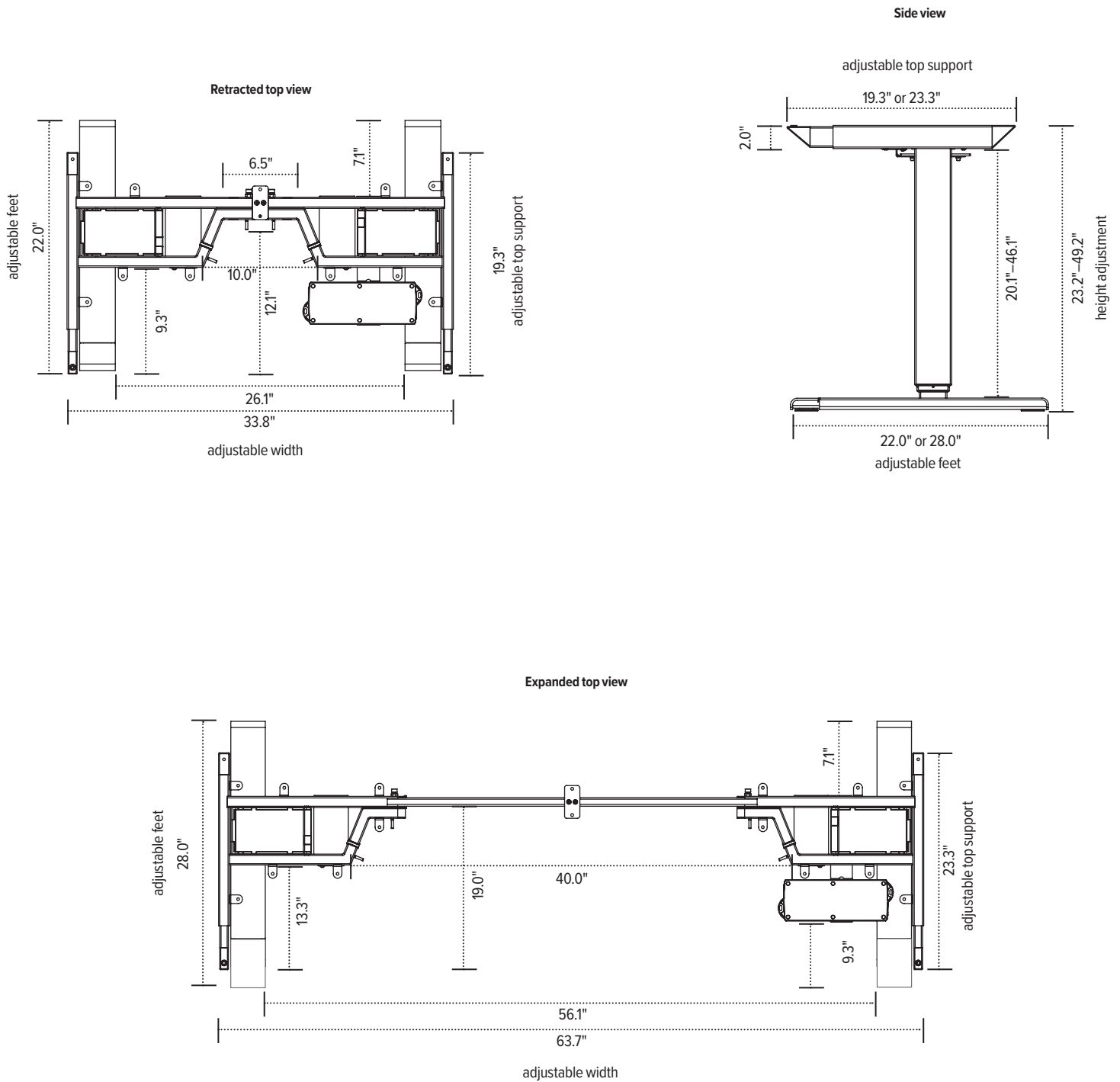
800.833.3746

esiergo.com

© 2019 Fellowes, Inc. V32 catalog pricing.

All-Flex 2-leg

electric table base



The base dimensions as shown are actual.

esi

800.833.3746
esiergo.com