



Trada™

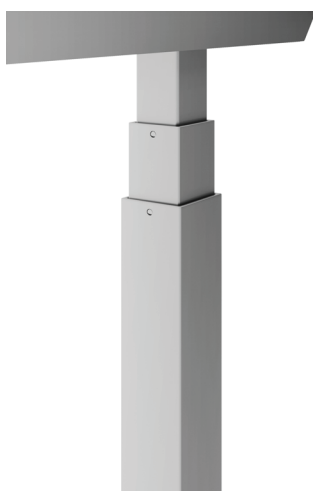
Electric height adjustable table base

Trada

Electric height adjustable table base



C-leg



three stage adjustable leg



standard keypad with
up and down buttons



locking casters



digital 4 memory keypad

Digital 4 memory keypad

- Digital Programmable Keypad with 4 memory settings
- Includes up and down buttons, a digital read out, 4 memory presets and a programmable upper and lower limit
- Sleep Mode to decrease power consumption

Model # 2TDM-DGTLKPD

Product specs

- Electric height adjustment
- 265 lb. base lifting capacity
- 1.5"/sec adjustment speed
- 25.5" height adjustment range
 - 24.5"–50.0" (low/high)
(excluding worksurface)
- Anti-collision
- Three stage adjustable legs
- C-leg
- Adjustable width frame accommodates worksurfaces 48.0"–72.0"
- Soft start and stop
- Locking casters available
- Two motors
- ADA compliant
- 9' power cord
- Table base is UL962 listed
- Meets or exceeds BIFMA x5.5, and CSA C22.2 #68 guidelines
- Works with peds or storage with 22.0" max. height
- Low standby power consumption
- Steel frame and foot construction
- Standard keypad with up and down buttons or digital 4-memory keypad available
- Complete tables available (*base and top*)
- Warranty: 15 yr. (*structural*)/7 yr. (*mechanical*)

Available base finishes

- ☐ Silver -SLV
- ☒ Black -BLK
- ☐ White -WHT

Caster Kit

- Set of casters for table base
- Increases height by 2.0"
- Locking casters for security

Model # CASTERKIT-2TD

Trada

Electric height adjustable table base



Complete quick ship table model # breakdown

2TD_-R4824-QS-T_-_
| | | | | | | | | |
a b d e f g h i j

2TDM_-R4824-QS-T_-_
| | | | | | | | | |
a b c d e f g h i j

- a: number of legs
- b: type of table base
- c: 4-memory digital keypad
- d: finish of base
- e: worksurface shape
- f: worksurface width
- g: worksurface depth
- h: quick ship indicator
- i: laminate material
- j: laminate color

48.0" x 24.0" quick ship complete table

- Trada table base with a 48.0"w x 24.0"d rectangle TFL worksurface with standard keypad

Model # 2TD- -R4824-QS-T- -

- Trada table base with a 48.0"w x 24.0"d rectangle TFL worksurface with digital keypad

Model # 2TDM- -R4824-QS-T- -

60.0" x 30.0" quick ship complete table

- Trada table base with a 60.0"w x 30.0"d rectangle TFL worksurface with standard keypad

Model # 2TD- -R6030-QS-T- -

- Trada table base with a 60.0"w x 30.0"d rectangle TFL worksurface with digital keypad

Model # 2TDM- -R6030-QS-T- -

■ base finish notation ■ laminate color notation

Available base finishes

- ☐ Silver -S
- ☒ Black -B
- ☐ White -W

Available TFL quick ship laminates

- ☒ Beigewood -BG
- ☒ Phantom Charcoal -PC
- ☒ Shadow Oak -SO
- ☐ Designer White -DW
- ☐ Grey -GR
- ☐ Dove Grey -DV

Trada table


Quick ship complete table options include: silver, black, or white table bases; 48.0"x24.0" or 60.0"x30.0" rectangle worksurfaces; all six TFL laminates. For all other combinations, please call our Customer Service Department for the estimated lead time and cost.

Multiple worksurface shapes and laminates are available. See Complete Table and Worksurface Guide for worksurface details including laminate colors.

Trada

Electric height adjustable table base



Table bases		Available worksurfaces				
Table base model	Worksurface shape	Worksurface dimension	TFL standard	HPL standard	HPL premium	
			Quick ship	Standard ship	Standard ship	Standard ship
2TD-C48-24-____ 2TDM-C48-24-____	 Rectangle	48"w x 24"d	2R4824-QS-TFL-__	2R4824-TFL-__	2R4824-HPL-__	2R4824-PHPL-__
		60"w x 24"d	—	2R6024-TFL-__	2R6024-HPL-__	2R6024-PHPL-__
		72"w x 24"d	—	2R7224-TFL-__	2R7224-HPL-__	2R7224-PHPL-__
2TD-C48-30-____ 2TDM-C48-30-____	Rectangle	48"w x 30"d	—	2R4830-TFL-__	2R4830-HPL-__	2R4830-PHPL-__
		60"w x 30"d	2R6030-QS-TFL-__	2R6030-TFL-__	2R6030-HPL-__	2R6030-PHPL-__
		72"w x 30"d	—	2R7230-TFL-__	2R7230-HPL-__	2R7230-PHPL-__

Worksurface Program

Multiple worksurface shapes and laminates are available. See the Complete Table & Worksurface Ordering Guide for worksurface details including pricing and laminate colors. TFL quick ship worksurfaces are shipped out in 48 hours, TFL standard and HPL standard/premium worksurfaces ship within three weeks. Lead time may vary depending on quantities ordered and their availability.

Table bases and worksurfaces can be purchased independently or as a combination.

ESI worksurfaces are made to exact dimensions. If nominal sizing is needed, please specify when ordering.

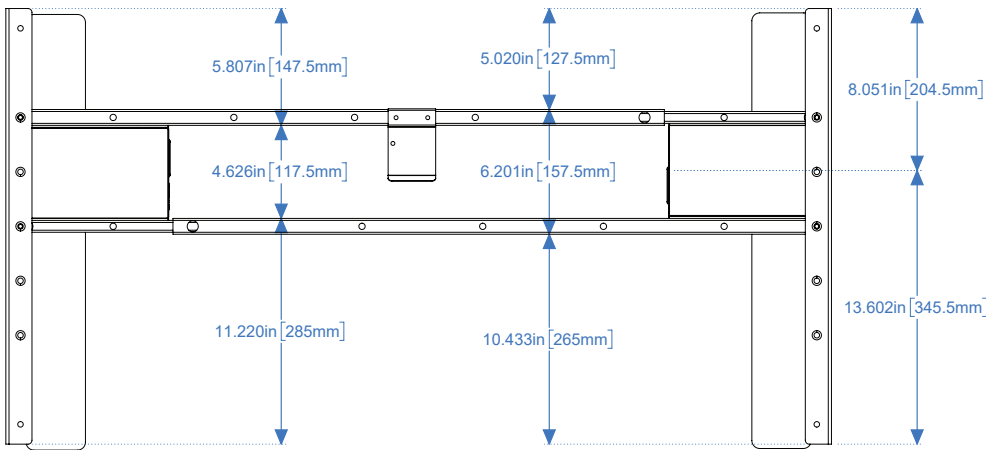
Trada

Electric height adjustable table base

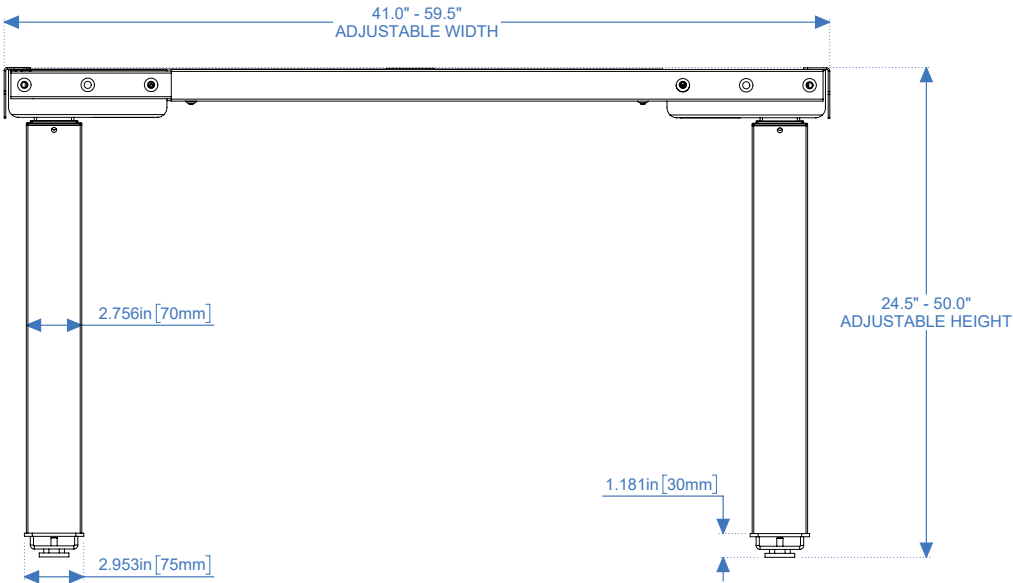
2TD-C48-24



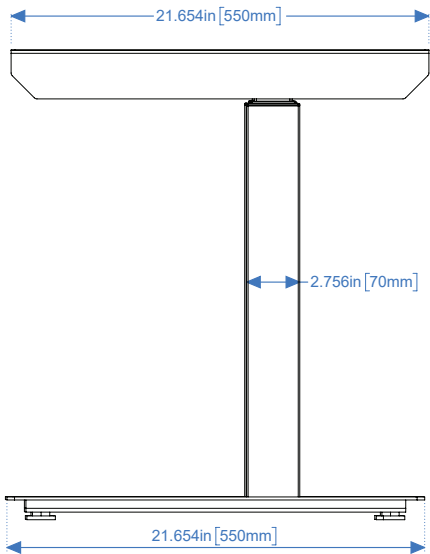
Top view



Front view



Side view



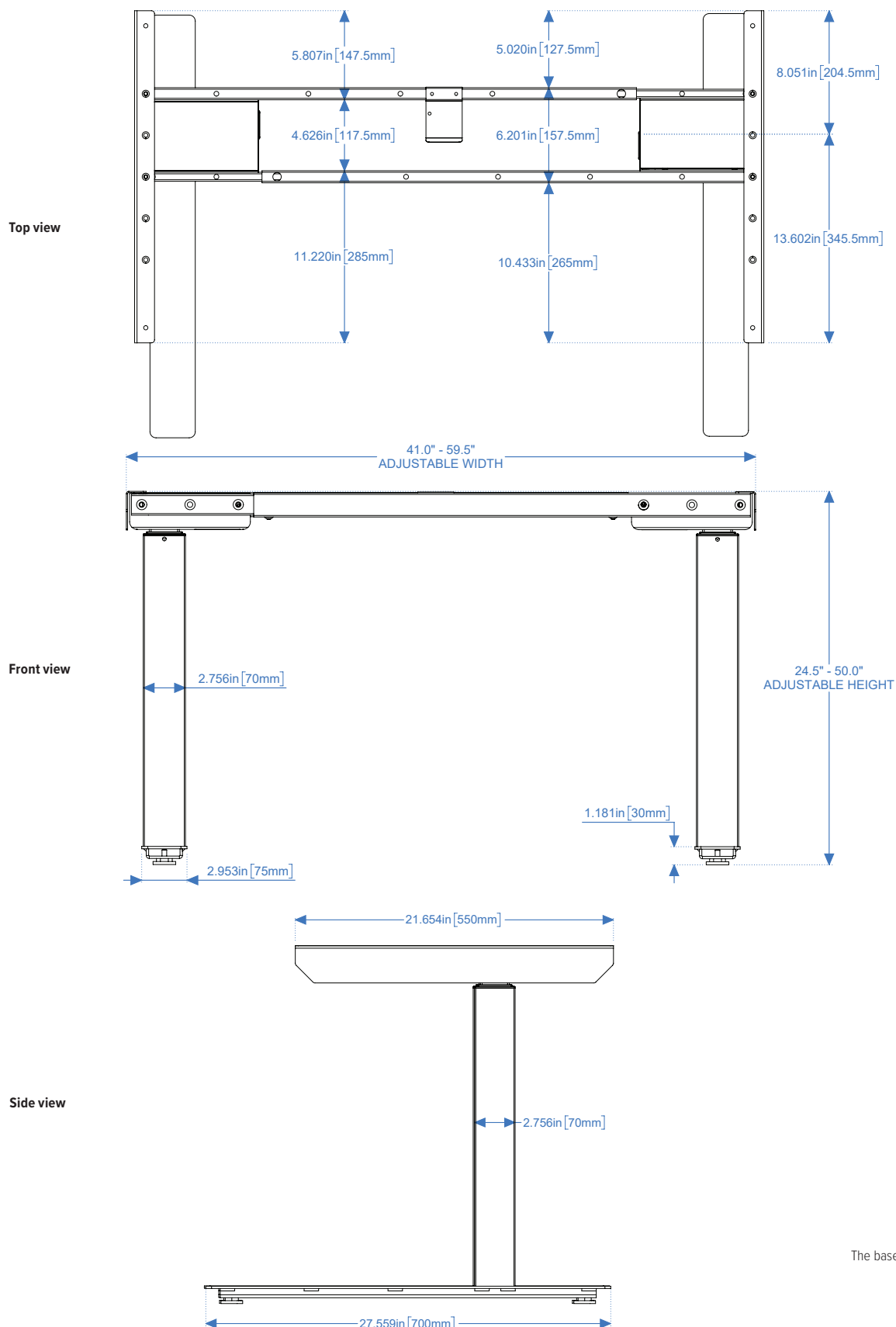
The base dimensions as shown are actual.

Trada

Electric height adjustable table base

2TD-C48-30

esi®



The base dimensions as shown are actual.