

Evolve6-FF

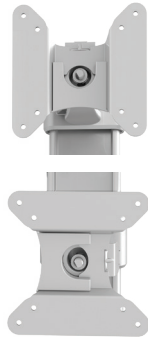
six fixed + fixed monitor arm

Evolve6-FF

six fixed + fixed monitor arm



cable management



landscape/portrait rotation



grommet mount



desk clamp



VESA quick release



integrated allen key storage

Product specs

- Manual height adjustment
- Recommended for worksurfaces 24.0" deep or less
- 26.8" outside arm extension
- 6.0" center arm extension
- 4.0" retraction
- +90°/-25° monitor tilt
- ±90° VESA rotation
- 0.0 lbs.– 20.0 lbs. weight capacity (*per arm*)
- 4.4 lbs.–15.4 lbs. weight capacity (*per outside arm*)
- 30.0" pole height
- VESA quick release
- 180° lock-out feature
- Desk clamp and grommet mount included
- 21.5" max. monitor width (*bezel measured left to right*)
Note: monitor height/weight might limit size
- Exceeds BIFMA x5.5 requirements
- Warranty: 15 yrs.



Model #	List price
<input type="radio"/> EVOLVE6-FF-SLV	\$1,432
<input checked="" type="radio"/> EVOLVE6-FF-BLK	\$1,432
<input type="radio"/> EVOLVE6-FF-WHT	\$1,432

Evolve monitor arm key

F - Fixed monitor arm

M - Motion monitor arm

S - Slider mount

Evolve for every need

- As workstation needs change, so can the Evolve configurations. Additional components sold separately.
- Benching system mount(s) available.

Call our Customer Service Department for compatibility and pricing for custom configurations.

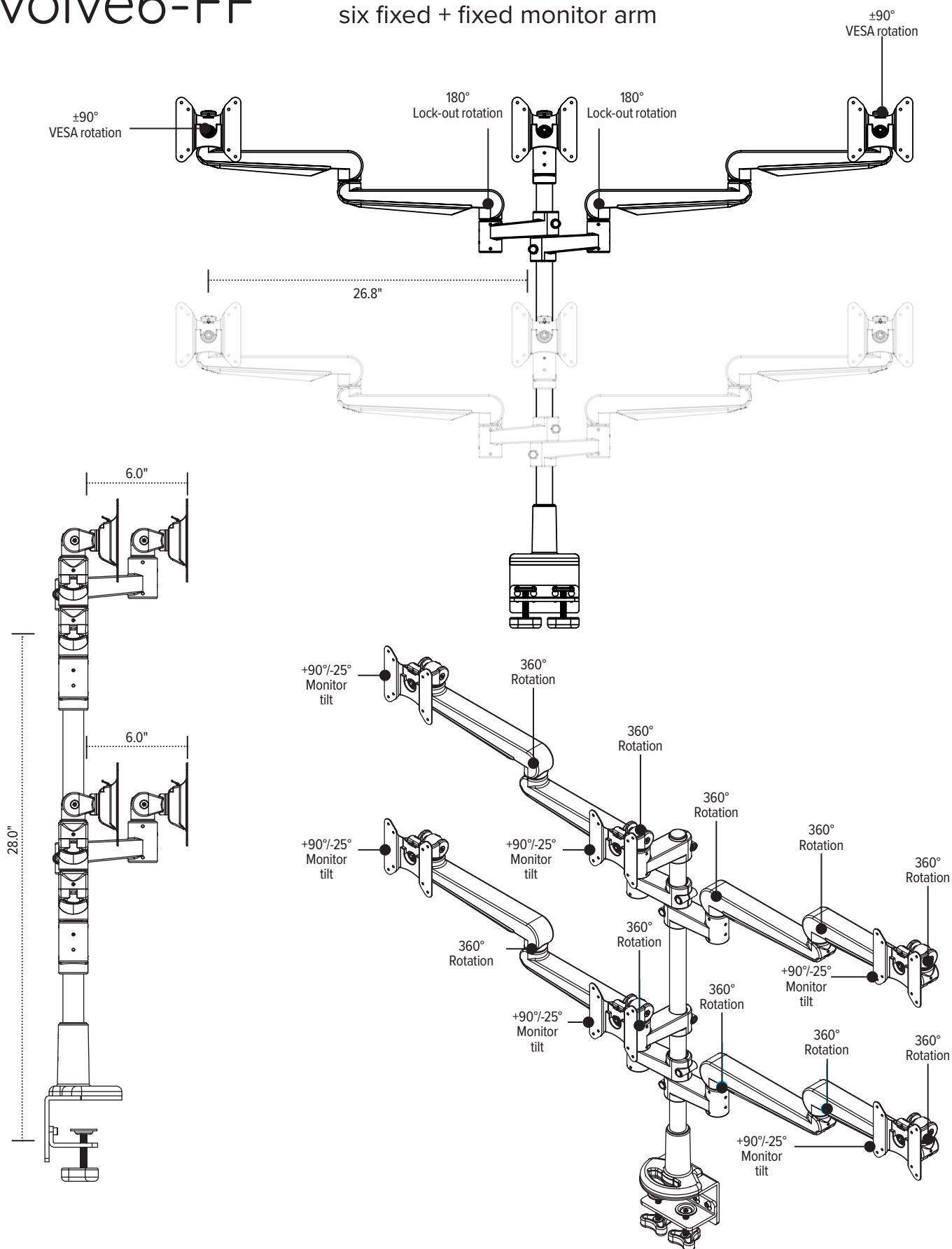
esi

800.833.3746
esiergo.com



Evolve6-FF

six fixed + fixed monitor arm



esi

800.833.3746
esiergo.com

© 2019 Fellowes, Inc. V32 catalog pricing.