



Kata™ EX3-FMS

Triple fixed + motion + slider monitor arm

KataEX3-FMS

Triple fixed + motion + slider monitor arm



tension adjustment



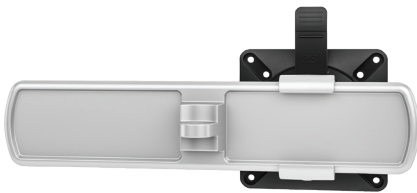
integrated tool storage



grommet mount



desk clamp



slider mount



connection sleeve

Product specs

- Finger touch dynamic height adjustment
- Recommended for worksurfaces 30.0" deep or less
- 26.32" outside arm extension
- 8.52" center arm extension
- 4.91" arm retraction
- +90°/-45° monitor tilt (*slider & standard mount*)
- ±90° VESA rotation
- Up to 20.0 lb. weight capacity (*center arm*)
2.5 lb.–18.5 lb. weight capacity (*per outside arm*)
- 15.99" pole height (*includes base*)
- VESA 75mm/100mm quick release
- 180° lock-out feature
- Includes a grommet mount or a desk clamp mount
- Slider provide 9.5" of additional horizontal adjustability
- Tension adjustment indicator for precision installation
- Each connection sleeve can accommodate up to three monitors depending on the configuration
- Partially assembled for quick installation
- Integrated cord management
- Integrated tool holder
- Meets or exceeds ANSI/BIFMA x5.5 guidelines
- 26.63" max. monitor width
Bezel measured left to right.
Max. width is contingent on weight capacity.
- Designed for ESI by Roger Webb Associates of London
- Warranty: 15 yr.

Model

- ☐ KATAEX3-DC-FMS-SLV
- ☒ KATAEX3-DC-FMS-BLK
- ☐ KATAEX3-DC-FMS-WHT
- ☐ KATAEX3-GM-FMS-SLV
- ☒ KATAEX3-GM-FMS-BLK
- ☐ KATAEX3-GM-FMS-WHT

KataEX monitor arm key

F - Fixed monitor arm
M - Motion monitor arm
S - Slider mount

Available mounting options

DC - Desk clamp
GM - Grommet mount

KataEX for every need

- As workstation needs change, so can the KataEX configurations. Additional components sold separately
- Benching system mount(s) available

Call our Customer Service Department for compatibility and pricing for custom configurations.

KataEX3-FMS



Triple fixed + motion + slider monitor arm

