



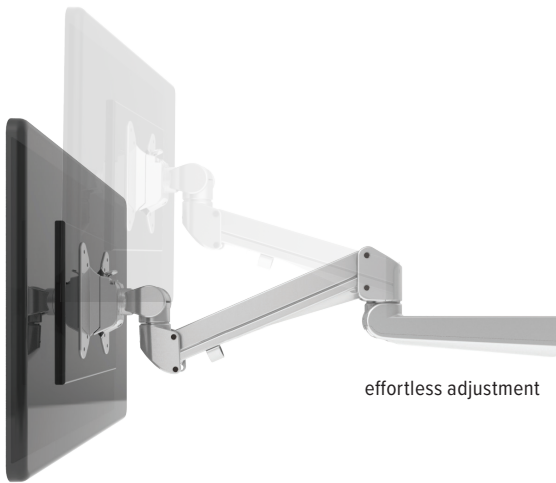
Edge[®] 2

Dual monitor arm

V34 - Pricing effective 3/1/2021

Edge2

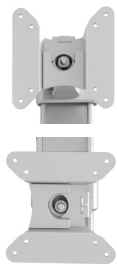
Dual monitor arm



effortless adjustment



cable management



landscape/portrait rotation



grommet mount



desk clamp



integrated allen key storage



VESA quick release

Product specs

- Finger touch dynamic height adjustment
- Recommended for worksurfaces 36.0" deep or less
- 12.0" height adjustment range
 - 7.0"–19.0" (low/high)
- 23.5" arm extension
- 4.1" arm retraction
- $\pm 90^\circ$ monitor tilt
- $\pm 90^\circ$ VESA rotation
- 6.5 lb.–17.6 lb. weight capacity (*per arm*)
- VESA 75mm/100mm quick release
- 180° lock-out feature
- Desk clamp and grommet mount included
- 32.0" max. monitor width
Bezel measured left to right.
Max. width is contingent on weight capacity.
- Meets or exceeds BIFMA x5.5 and CSA CAN/CGSB44.227 guidelines
- Benching system mount(s) available.
Call the Customer Service Dept for details
- Warranty: 15 yr.



Model #	List price
<input type="radio"/> EDGE2-SLV	\$726
<input checked="" type="radio"/> EDGE2-BLK	\$726
<input type="radio"/> EDGE2-WHT	\$726

Edge2

Dual monitor arm

