



esi®



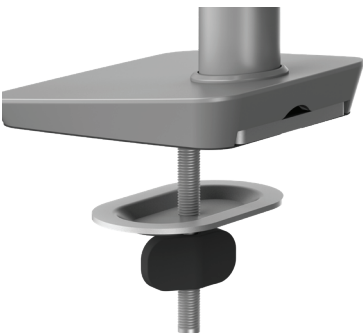
Sena™ EX3-FMS

Triple fixed + motion + slider monitor arm

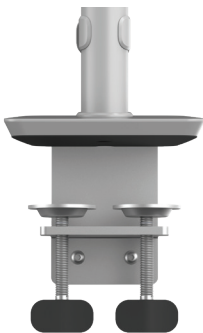
V36 - Pricing effective 1/1/2022

Sena™EX3-FMS

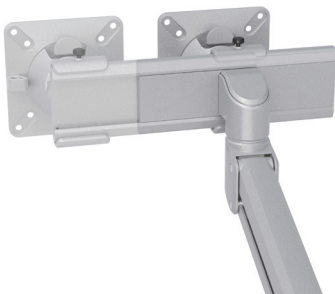
Triple fixed + motion + slider monitor arm



grommet mount



desk clamp



slider mount

Product specs

- Finger touch dynamic height adjustment
- Recommended for worksurfaces 30" deep or less
- 12.7" height adjustment range
- 27.2" arm extension
- 4.6" center arm extension
- 4.7" arm retraction
- +/-60° monitor tilt
- +/-90° VESA rotation
- 2.2lb. - 19.8lb weight capacity (per arm)
- 16" pole height (includes base)
- VESA 75mm/100mm quick release
- 180° lock-out feature
- Desk clamp and grommet mount included
- Integrated cord management
- 270° / 135° arm rotation with 180° lock out
- 13.9" max monitor width
 - Bezel measured left to right
 - Max width is contingent on weight capacity
- Meets or exceeds ANSI/BIFMA x5.5 guidelines
- Warranty: 15 yr

Model #	List price
<input type="radio"/> SENAEX3-FMS-SLV	\$930
<input checked="" type="radio"/> SENAEX3-FMS-BLK	\$930
<input type="radio"/> SENAEX3-FMS-WHT	\$930

SenaEX monitor arm key	Available mounting options
F - Fixed monitor arm	DC - Desk clamp
M - Motion monitor arm	GM - Grommet mount
S - Slider mount	

SenaEX for every need

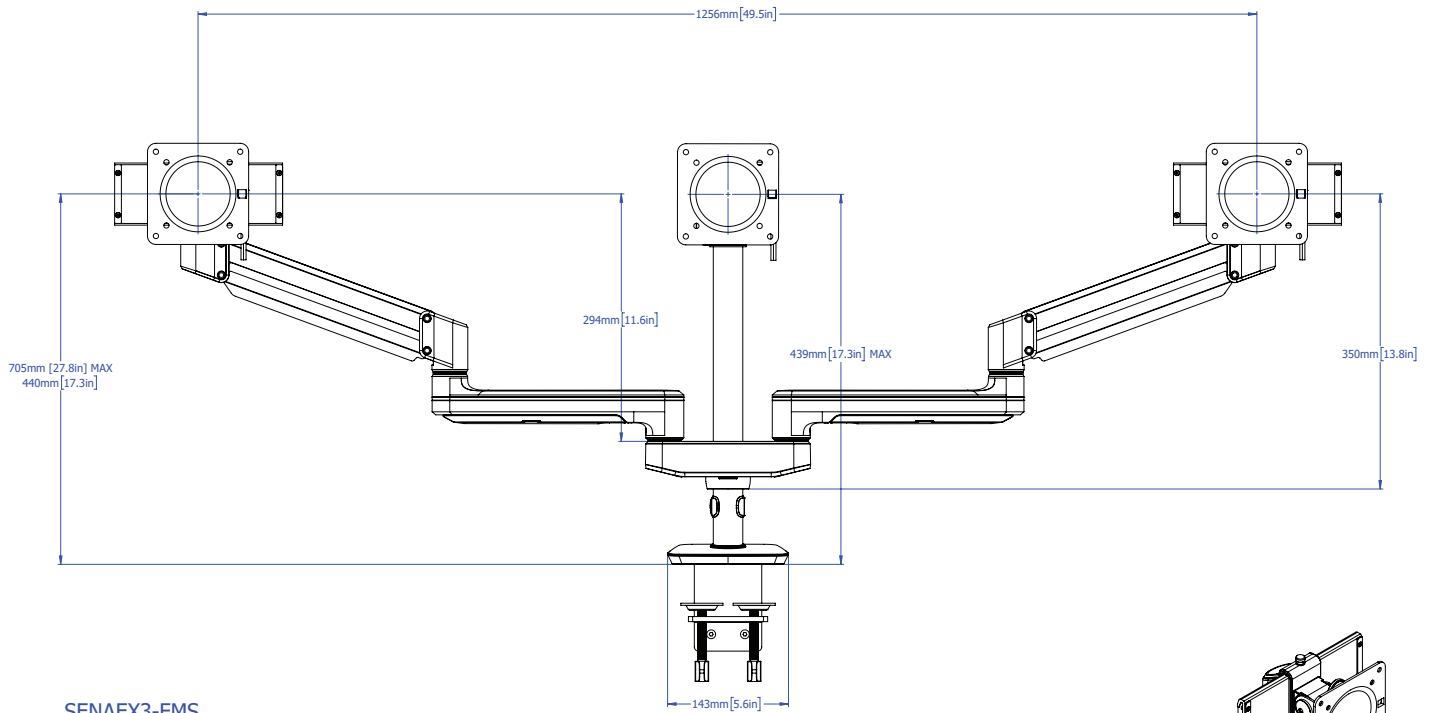
- As workstation needs change, so can the SenaEX configurations. Additional components sold separately

Call our Customer Service Department for pricing for custom configurations.

Sena™ EX3-FMS

esi®

Triple fixed + motion + slider monitor arm



SENAEX3-FMS

