



# Kata™ EX2-FMS

Dual fixed + motion + slider monitor arm

# KataEX2-FMS

Dual fixed + motion + slider monitor arm



tension adjustment



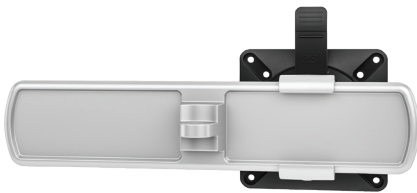
integrated tool storage



grommet mount



desk clamp



slider mount



connection sleeve

## Product specs

- Finger touch dynamic height adjustment
- Recommended for worksurfaces 36.0" deep or less
- 26.32" arm extension
- 4.91" arm retraction
- +90°/-45° monitor tilt
- ±90° VESA rotation
- 2.5 lb.–18.5 lb. weight capacity (*per arm*)
- 15.99" pole height (*includes base*)
- VESA 75mm/100mm quick release
- 180° lock-out feature
- Specify a grommet mount or a desk clamp mount
- Slider provide 9.5" of additional horizontal adjustability
- Tension adjustment indicator for precision installation
- Each connection sleeve can accommodate up to three monitors depending on the configuration
- Partially assembled for quick installation
- Integrated cord management
- Integrated tool holder
- Meets or exceeds ANSI/BIFMA x5.5 guidelines
- 62.79" max. monitor width  
*Bezel measured left to right.*  
*Max. width is contingent on weight capacity.*
- Designed for ESI by Roger Webb Associates of London
- Warranty: 15 yr.

## Model #

- ☐ KATAEX2-DC-FMS-SLV
- ☒ KATAEX2-DC-FMS-BLK
- ☐ KATAEX2-DC-FMS-WHT
- ☐ KATAEX2-GM-FMS-SLV
- ☒ KATAEX2-GM-FMS-BLK
- ☐ KATAEX2-GM-FMS-WHT

## KataEX monitor arm key

- F - Fixed monitor arm
- M - Motion monitor arm
- S - Slider mount

## Available mounting options

- DC - Desk clamp
- GM - Grommet mount

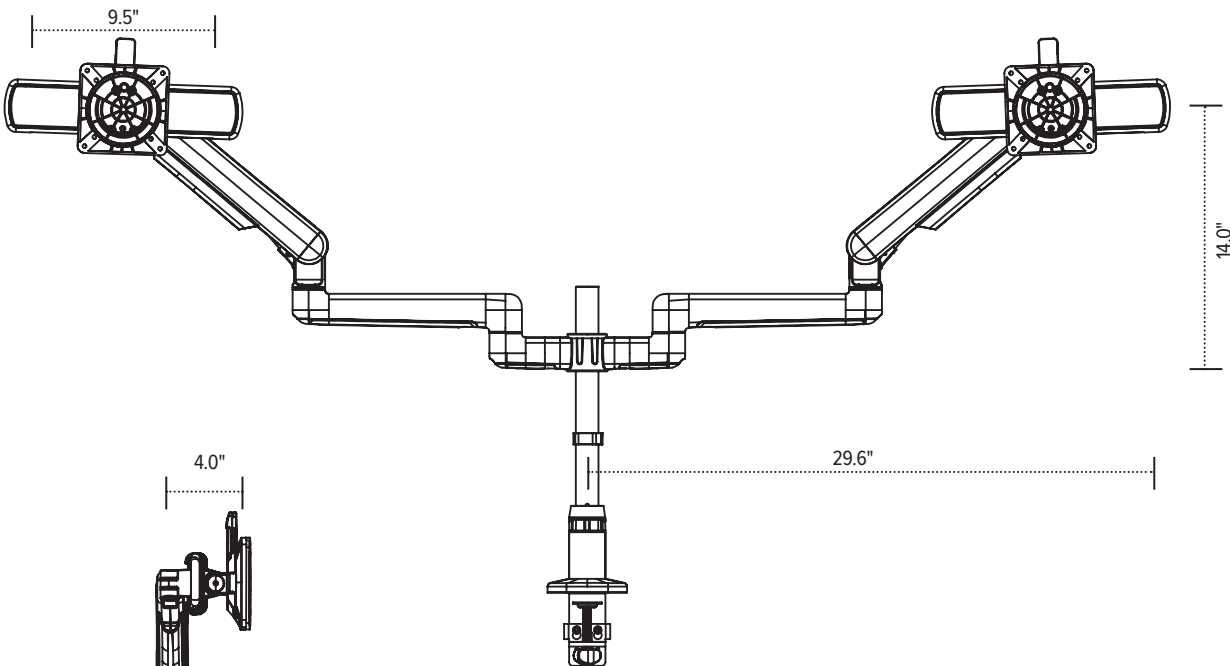
## KataEX for every need

- As workstation needs change, so can the KataEX configurations. Additional components sold separately
- Benching system mount(s) available

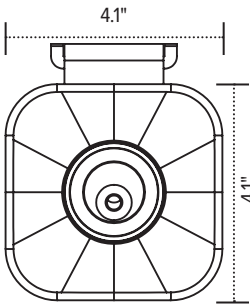
*Call our Customer Service Department for compatibility and pricing for custom configurations.*

# KataEX2-FMS

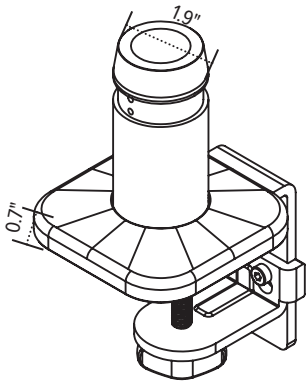
Dual fixed + motion + slider monitor arm



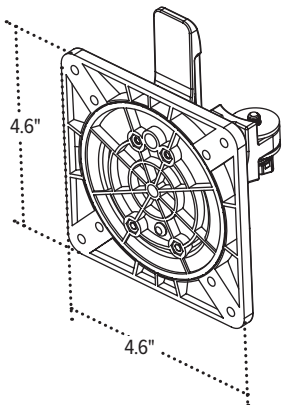
Base



Base



VESA plate



VESA mount  
(profile view)

