



esi

Healthcare  
Solutions





ESI is a customer obsessive organization that designs, develops and distributes work gear that allows individuals to create highly productive and comfortable environments. Leveraging a foundation of operational excellence, product innovation and distribution management, ESI strives to exceed the expectations of our customers, users, team members and stakeholders.

# The ESI Difference

## Customer Service Department

Toll Free: 800.833.3746

[customerservice@esiergo.com](mailto:customerservice@esiergo.com)

Please e-mail your orders to [orders@esiergo.com](mailto:orders@esiergo.com)

[orders@esiergo.com](mailto:orders@esiergo.com).

ESI's customer obsessive, award-winning team is on-call to assist with any work gear needs. We are ready to answer questions or recommend products that help customers achieve their best at work.

ESI honors a no restocking fee for our customers, if the return is approved in advance.

## 48 hours

ESI can fulfill orders in as little as 48 hours based on product on-hand availability. We do this by maintaining high inventory levels of the most popular products so our customer can meet ambitious deadlines and schedules. ESI's exceptional fulfillment service ensures you get the products you want, when you want them. Unless otherwise specified, most of ESI's products ship within two business days after the order is placed and acknowledged.

## Lead time

The **LT** product marker indicates that the lead time may vary depending on quantities ordered and their availability. Please contact our Customer Service Department for on-hand availability when placing orders for products marked with LT. Purchase Orders that include LT designated products will be shipped based on the lead time of those products. Split shipments are available for orders that include both LT and non-LT products.

## 15 year warranty

ESI's work gear is backed by an industry-leading 15 year product warranty – giving you confidence to take on your work, your way. Ask us about our labor warranty reimbursement program. View the full warranty policy at [esiergo.com](http://esiergo.com) or contact our Customer Service Department for more information.

## Reserved inventory

ESI's team is focused on helping our customers execute large projects on time. A Reserved Inventory Program is offered for projects totaling at least \$15,000 net. Find out how this program can help make your projects a success by contacting our Customer Service Department.

## General information

All prices in the catalog are effective March 1, 2020, and are list price in U.S. dollars. All measurements are accurate within 0.25". Visit ESI's website [esiergo.com](http://esiergo.com) for additional specs, dimensional drawings, alternative images and more resources for all of ESI's products.

## Sustainability

What works for us also works for our planet. As a company, we're committed to providing solutions that foster sustainability and a focused attention on maintaining good environmental practices. That means selecting products that reflect this commitment. Adopting procedures that promote sustainability. Creating recycling programs. Reviewing and enhancing our operations. Because for us, it's the right thing to do.



# Government

ESI is proud to provide ergonomic work gear to federal, state, and local governments.

Visit [esiergo.com](http://esiergo.com) for a complete list of our government contracts and Cooperative Purchasing Agreements. Or contact our Customer Service Department.

The products available through GSA are designated as 



## Important government numbers

Contract: GS-28F-0028Y

NAICS Codes: 337214; 339999; 423210; 423450; 424120

SIN 711-2: Worksurfaces, workstations, computer furniture and accessories

SIN 711-11: Tables and accessories

SIN 71 500: Order level management

Duns: 005070008

CAGE: 63090

Tax ID Number (TIN): 36-0770670



# Wall-mounted work gear

Deliver work gear in limited spaces with wall-mounted solutions. Ideal for multiple users in community spaces, wall mounted work gear increases efficiency, productivity, and collaboration. Amplify your team's productivity with gear tailored for your space.



*Product shown: Titan2-Edge*





## Titan-Edge

Single track-mounted workstation

**\$1,317**

MODEL # TITAN-EDGE

Keyboard arm and monitor arm can be positioned anywhere along the wall track

For left or right-handed users

Keyboard tray folds up or down to save space

Edge® monitor arm

One 31.5" aluminum alloy wall track

Includes track covers to conceal cords



## Titan2-Edge

Dual track-mounted workstation

**\$1,525**

MODEL # TITAN2-EDGE

Keyboard arm and monitor arm can be positioned anywhere along the wall track

For left or right-handed users

Keyboard tray folds up or down to save space

Edge® monitor arm

Two 31.5" aluminum alloy wall tracks (63.0" total)

Mini CPU holder (PAC-CPUMINI)

Includes track covers to conceal cords



## Additional accessories

### Mini CPU holder

Specifically for Titan track series

**\$108**

MODEL # PAC-CPUMINI

3.3"–6.0" adjustable width

55 lb. load capacity

Fits CPUs 5.0"–20.0" in overall height

Compatible only with the Titan track series



### Locking CPU holder

Specifically for Titan track series

**\$481**

MODEL # PAC-CPULOCK LT

3.5"–9.3" adjustable width

12.5"–22.5" adjustable height

85 lb. load capacity

Heavy duty knob with special hex key

Compatible only with the Titan track series



# Work gear on wheels

Built-in wheels make this convenient equipment portable and easy to move so you can keep technology accessible for an efficient work environment.



Product shown: WOW



Product shown: WOW01



## WOW

Complete workstation-on-wheels

**\$1,539**

MODEL # WOW

Pneumatic lift platform with wire controller  
 5-star base with heavy-duty casters *(2 locking)*  
 Includes cable management system  
 13.0" height adjustment for platform  
 28.0"–41.0" (low/high)  
 26.8"w x 22.8"d platform measurement  
 28.8" diameter base measurement  
 20lb. weight capacity *(including surface)*  
 Platform with palm rest  
 Fixed monitor mount  
 CPU holder  
 13.0"–21.0" adjustable height  
 2.5"–8.3" adjustable width  
 50lb. capacity



## WOW01

Base model workstation-on-wheels

**\$996**

MODEL # WOW01

Pneumatic lift platform with wire controller  
 5-star base with heavy-duty casters *(2 locking)*  
 Includes cable management system  
 13.0" height adjustment for platform  
 28.0"–41.0" (low/high)  
 26.8"w x 22.8"d platform measurement  
 28.8" diameter base measurement  
 20lb. weight capacity *(including surface)*  
 Additional accessories available



## Additional accessories

### CPU Holder

Specifically for WOW series

**\$260**

MODEL # WOWCPU

Adjustable CPU holder for WOW01  
 Non-porous foam material prevents CPU damage  
 Can be cleaned and sanitized to maintain a germ-free environment  
 50lb. capacity  
 13.0"–21.0" adjustable height  
 2.5"–8.3" adjustable width  
 Compatible only with the WOW/WOW01



### Monitor Mount

Fixed height monitor arm for WOW series

**\$217**


MODEL # WOWMR

+90°/-25° monitor tilt  
 90° portrait/landscape adjustment  
 90° side-to-side rotation  
 Compatible only with the WOW01



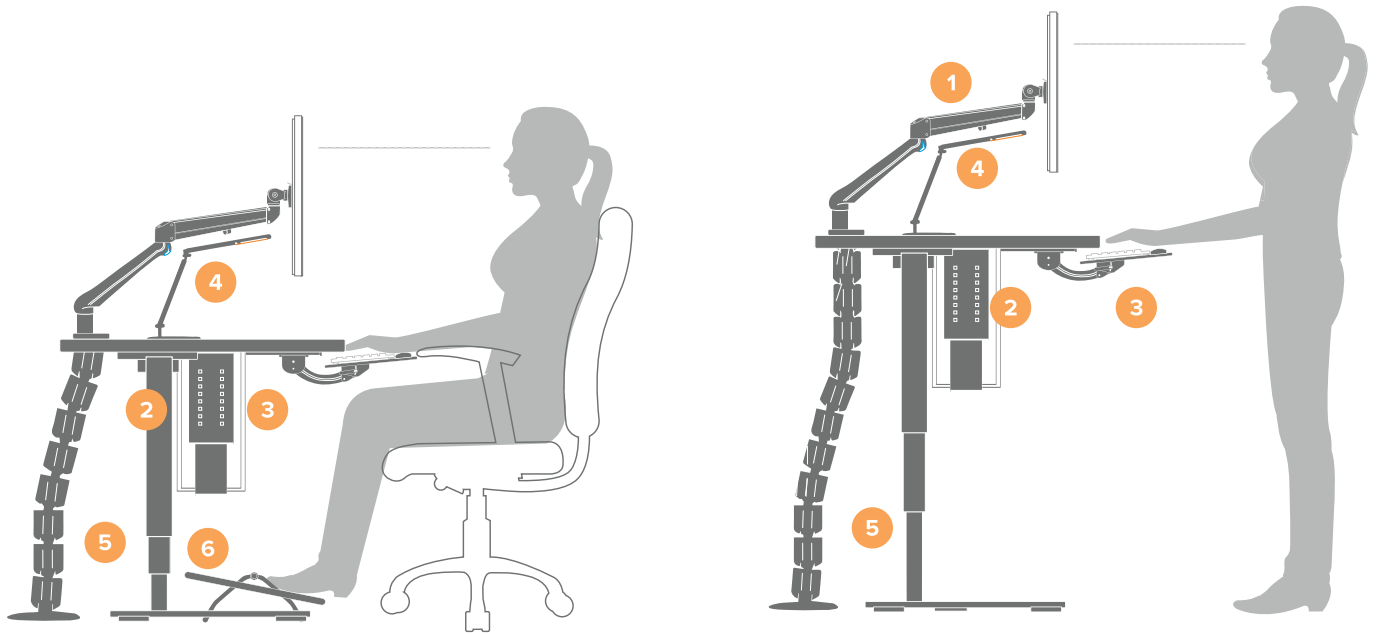
Visit our website for additional specs, dimensional drawings, alternative images and more resources for all of ESI's products.





Create high performance work environments with work gear that enhances worker comfort and productivity.

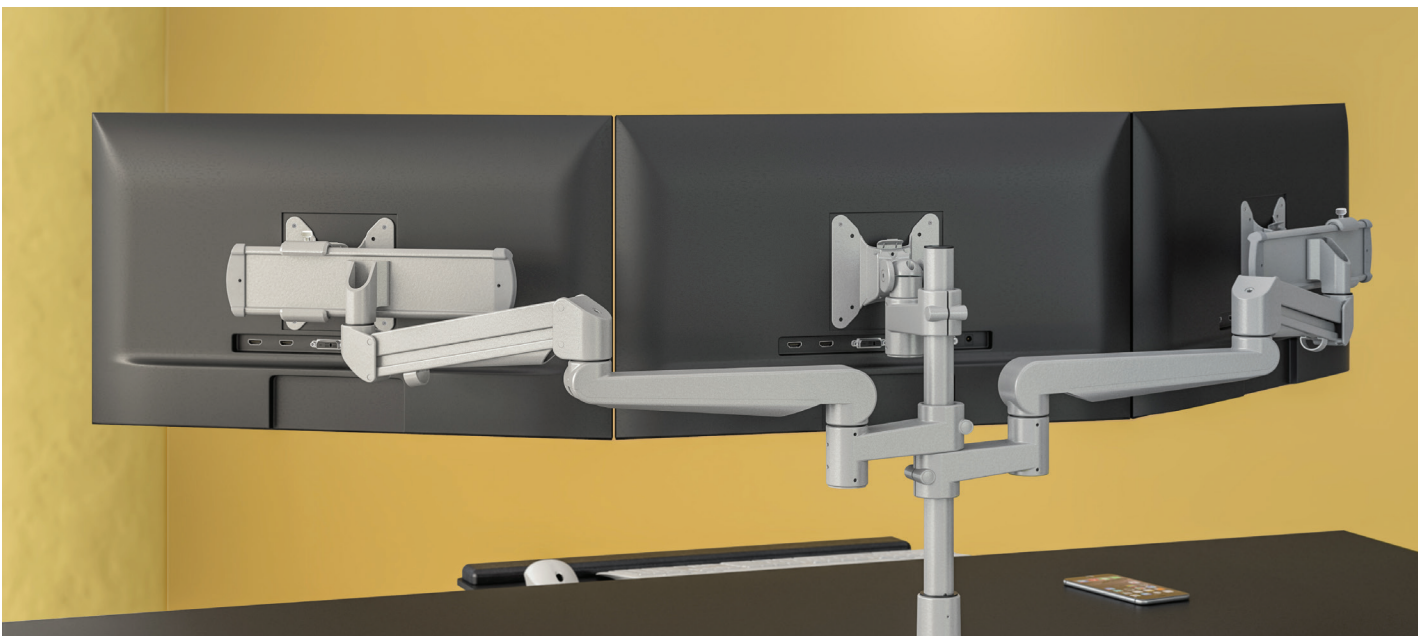
# Ergonomic guidelines



- 1 Adjustable monitor arms** help eliminate the tendency to sit in awkward positions by maintaining the proper viewing distance, height and angle of the monitor. Monitor arms keep the neck, shoulders and back in the proper posture to reduce muscle fatigue. They also free up the workspace to reduce clutter and increase efficiency and collaboration. Using dual monitors can increase productivity over a single monitor.
- 2 CPU holders** raise the CPU off the floor, making them easier for the user to reach and reducing the tendency to stretch into an awkward position. CPU holders also help free up workspace as well as leg room in user's workstation.
- 3 Adjustable keyboard platforms** help maintain a neutral wrist position and eliminate strain, improper posture, and discomfort. Proper keyboard positioning can help eliminate musculoskeletal disorders.
- 4 Adjustable task lighting** gives the user maximum control of their own workspace lighting for optimal comfort, and help reduce eyestrain and fatigue. Energy efficient lights can reduce energy consumption and costs.
- 5 Height adjustable workstations** give users the flexibility to change positions frequently and easily throughout the day, which improves health and productivity.
- 6 Footrests** can help decrease circulation problems that can occur from long periods of sitting or inactivity. By supporting the legs, footrests can relieve pressure on the lower back.

# Monitor arms

Adaptable for any workspace, flexible monitor arms can optimize your desk space and increase your productivity. Easily adjust up to six monitors to maximize comfort and efficiency. Configurations grow with you, so your monitors will keep pace with your needs.



Product shown: (Top Left) Eppa2, Triumph-LX (Top Right) Edge2-MS (Bottom) Evolve3-FMS



# Eppa™ series



## Eppa

Single monitor arm

**\$225**

MODEL # EPPA-SLV



## Eppa2

Dual monitor arm

**\$424**

MODEL # EPPA2-SLV

### Available arm finishes

● Silver -SLV

### Height adjustment

Beneath the Eppa's minimal design is a reliable and smooth finger touch gas spring adjustment control that supports an 10.5 inch dynamic height adjustment range.

### Retraction

Retracting to a four inch depth and extends 20 inches, Eppa offers a comfortable viewing distance no matter the size of the workstation.

### Conversion

Reuse most of the parts in your single Eppa arm when you convert up to the dual Eppa2 with our simple kit. Conversion kit sold separately.

### Quality testing

Meets or exceeds BIFMA x5.5 and CSA CAN/CGSB44.227 guidelines.

### Eppa conversion kit

Converts an existing Eppa single monitor arm to an Eppa2 dual arm.

Kit includes:

One single arm

One dual base

One clamp

One grommet mount

**\$280**

MODEL # EPPA2KIT-SLV

*Available in silver*

Visit our website for additional specs, dimensional drawings, alternative images and more resources for all of ESI's products.

# Edge<sup>®</sup> Series



## Edge

Single monitor arm

**\$374**

MODEL # EDGE-\_\_\_



## Edge2

Dual monitor arm

**\$705**

MODEL # EDGE2-\_\_\_



## Edge-Wall

Wall-mounted single monitor arm

**\$374**

MODEL # EDGE-WALL-SLV



### Available arm finishes



Silver -SLV



Black -BLK



White -WHT

### 180° lock-out

Prevents the arm from getting pushed back too far and bumping into a rear cubicle, wall or glass

### VESA quick release

Quickly install and swap monitors with the quick release VESA plate

### Dual Monitor Arms

Can support two monitors up to 32 inches wide

### Quality testing

Meets or exceeds BIFMA x5.5 and CSA CAN/CGSB44.227 guidelines.

### Edge2 conversion kit

Converts an existing Edge single monitor arm to an Edge2 dual arm.

Kit includes:

- One single arm
- One desk stand
- One clamp
- One grommet mount

**\$382**

Model # EDGE2KIT-\_\_\_

Available in silver, black, and white

Visit our website for additional specs, dimensional drawings, alternative images and more resources for all of ESI's products.

# Evolve Series



## Evolve1-F

Single fixed monitor arm

**\$323**

MODEL # EVOLVE1-F-\_\_ \_



## Evolve1-M

Single motion monitor arm

**\$408**

MODEL # EVOLVE1-M-\_\_ \_



## Evolve2-FMS

Dual fixed + motion + slider monitor arm

**\$933**

MODEL # EVOLVE2-FMS-\_\_ \_



## Evolve2-MS

Dual motion + slider monitor arm


**\$819**

MODEL # EVOLVE2-MS-\_\_ \_



### Available arm finishes

 Silver -SLV

 Black -BLK

 White -WHT

### Evolve motion arms

Evolve configurations that include a motion arm (M) offer finger touch dynamic height adjustment. That means the monitor can reposition up and down with ease.

### Evolve fixed arms

Evolve configurations using only fixed arms (F) have manual height adjustment. They rotate left and right along the pole, offering flexibility with lateral adjustments.

### Slider mount

Position virtually any monitor side-by-side with a slider. The slider (S) offers eight and a half inches of horizontal adjustability, so even monitors of varying sizes can be positioned flush.

### Flexible growth

Because the Evolve is pole mounted, arms can be added as needed to support additional monitor.

### Quality testing

Meets or exceeds BIFMA x5.5 and CSA CAN/CGSB44.227 guidelines.

### Customize the Evolve

As workstation needs change, so can the Evolve configurations. Additional components are sold separately.

Motion arms

Fixed arms

Stubby arms

30.0" pole (*height includes base*)

Slider mounts

*Contact our Customer Service Department for compatibility and pricing for custom configurations*

### Evolve Conversion Kit

Converts an existing Evolve1-MS single monitor arm to an Evolve2-MS dual arm.

Kit includes:

One slider

One single motion arm

One arm stem

**\$352**

MODEL # EVOLVEKIT-1MS2MS-\_\_ \_

*Available in silver, black and white*

Visit our website for additional specs, dimensional drawings, alternative images and more resources for all of ESI's products.



# Sit-to-stand workstations

Stay comfortably on the move with desks that quickly and easily adjust to the best height for you. Sit-to-stand workstations support monitors or laptop computers, and feature built-in keyboard platforms. Any fixed-height workstation can be easily retrofitted to offer adjustable height options, so you can keep your momentum and your mobility.



Product shown: Eppa2, S2S, FlexCharge4



## S2S

Sit-to-stand workstation

**\$714**

MODEL # S2S-BLK



### Vertical motion

Straight vertical travel increases stability of work gear and technology.

### Precision positioning

Moves all of the workstation essentials in one fluid motion, stopping at any point along the way.

### Weight adjustment

Weight adjustable counterbalance pneumatic lift capability; built-in tension adjustment makes even heavy loads easy to lift with one hand. Tension is pre-set to lift 22 pounds.

### Add monitor arms

Compatible with Eppa™, Edge® and Evolve single and dual monitor arms.

*Monitor arms sold separately*



## Climb

Single monitor arm sit-to-stand workstation

**\$869**

MODEL # CLIMB1-SLV

### Flexible positioning

Utilize your complete worksurface area by rotating the workstation side-to-side with the articulating arm. Single monitor arm integration allows monitor to be rotated for view in landscape or portrait orientation.

### Palm rest

Includes palm rest, adaptable for left or right-handed users on the keyboard platform.

Pneumatic height adjustment

Clamp mount to worksurface

Cable management



## Climb2

Dual monitor arm sit-to-stand workstation

**\$1,038**

MODEL # CLIMB2-SLV

Visit our website for additional specs, dimensional drawings, alternative images and more resources for all of ESI's products.



# Height adjustable tables

Keep moving throughout your day with height adjustable tables. Sit or stand options can be quickly and easily tuned to your comfortable height. Adaptable for any workspace, these tables can be used for workstations, individual offices, training rooms, and open environments. Options include electric, pneumatic, and crank bases, with two or three-leg configurations.



*Product shown: All-Flex 3-leg, Evolve2-M, Solution Ultra, CPU05, FlexCharge4, Lustre, Conceal*



*Product shown: TriumphLX, Eppa2, Pixie LEDX, Solution1, CPU-01, Centro*





## All-Flex® 3-Leg

Electric height adjustable table

**\$2,486**

MODEL # FLEX3-\_\_ \_\_



## All-Flex® 2-Leg

Electric height adjustable table

**\$1,645**

MODEL # FLEX2-\_\_ \_\_



## TriumphLX™ 2-leg

Electric height adjustable table

**\$943**

MODEL # 2T-LX-\_\_ -\_\_ -\_\_ -\_\_



### Electric motors

Includes two motors (2-leg) and three motors (3-leg) allowing smooth height adjustment while supporting a broad range of worksurface weights

### Versatility and flexibility

Provides adjustable cross channels, top supports and feet making it one of the most adjustable table bases on the market.

### One part number

All-Flex uses only one part number for all 2-leg sizes and all 3-leg sizes and configurations.

### Keypad

Includes a digital keypad with four memory settings.

### 3-leg Configurations


Can be configured for 90° or 120° with a universal bracket.

### Quality testing

Meets or exceeds BIFMA x5.5 guidelines.

### Available base finishes

 Silver -SLV

 Black -BLK

 White -WHT

Locking casters available

### Two motors

Includes two motors allowing smooth height adjustment while supporting a broad range of worksurface weights.

### Cross channels

With adjustable cross channels, the table base can adapt over time with the changing technology and work gear needs of the user.

### Keypad

Includes a digital keypad with three memory settings.

### Quality materials

Steel frame and foot construction offers outstanding stability.

### Quality testing

Meets or exceeds BIFMA x5.5 guidelines.

### Available base finishes

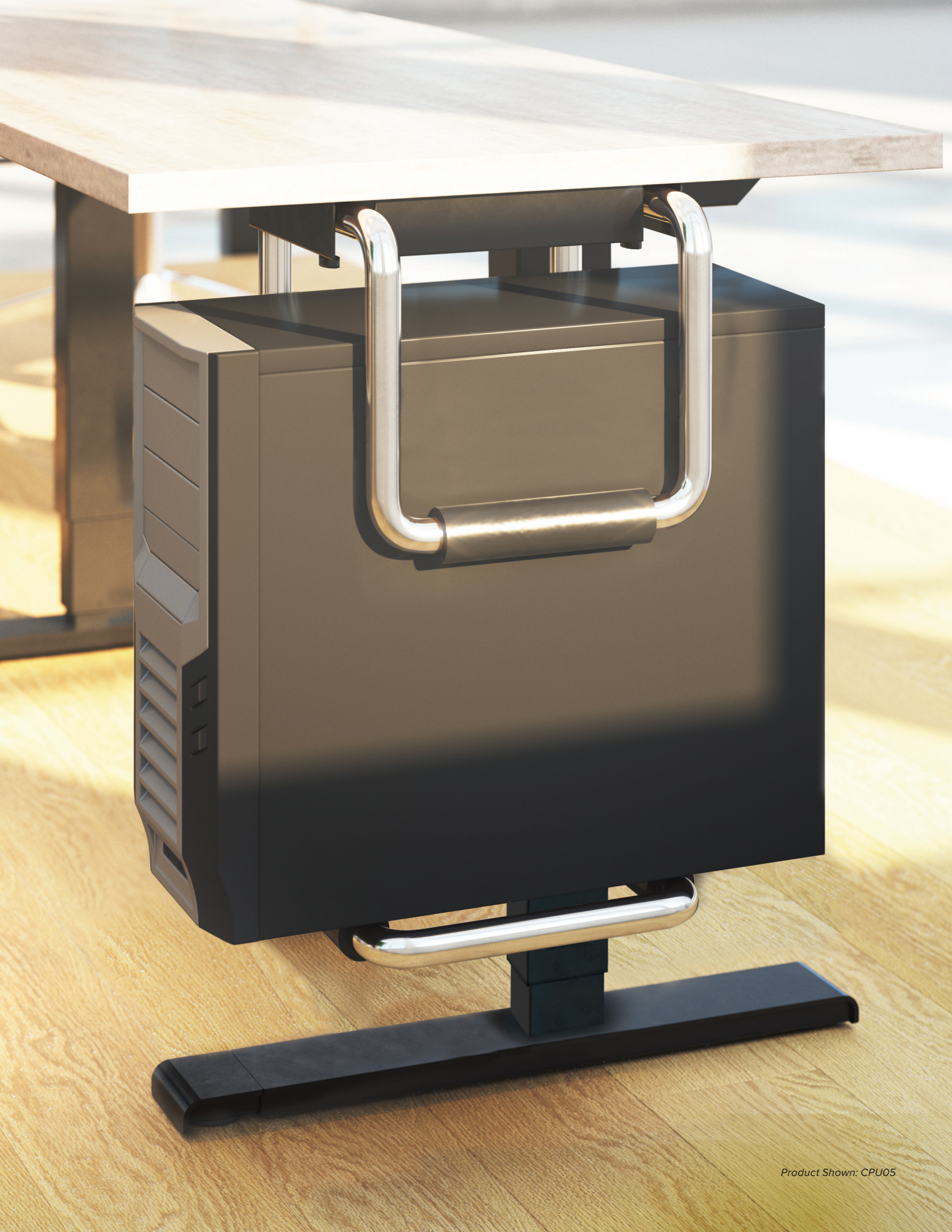
 Silver -SLV

 Black -BLK

 White -WHT

Locking casters available

Table bases and worksurfaces can be purchased independently or as a combination. Multiple worksurface shapes are available. Go to [esiergo.com](http://esiergo.com) for full list. Worksurfaces can come in a variety of laminates. Visit our website for additional specs, dimensional drawings, alternative images and more resources for all of ESI's products.





# Table base accessories

## CPU Cart

Mobile CPU cart



**\$161**

MODEL # CPUCART-1-BLK

160 lb. load capacity  
Fits CPUs ranging from 3.8"–9.0" wide  
CPU sits in adjustable tray  
Four swivel caster wheels (2 locking)  
Easy to assemble; no tools required to make adjustments



## CPU01

Simple CPU holder



**\$180**

MODEL # CPU01

125 lb. load capacity  
360° swivel  
17.8" glide track  
12.5" min. CPU depth  
8.0" min. CPU width  
24.0" min. CPU height  
60.0" adjustable straps  
Nylon security bands



## CPU mini

Small profile CPU holder



**\$201**

MODEL # CPUMINI

55 lb. load capacity  
360° swivel  
13.4" ball bearing glide track  
16.0"–22.0" adjustable height  
Fits CPUs up to 20.0" in height



## CPU05

Heavy duty CPU holder



**\$233**

MODEL # CPU05

100 lb. load capacity  
360° swivel  
17.8" glide track  
2.5"–8.3" adjustable width  
13.0"–21.0" adjustable height



## Conceal

Cable management spine



**\$68**

MODEL # CONCEAL-GRY

MODEL # CONCEAL-BLK

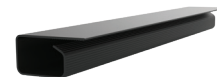
MODEL # CONCEAL-WHT

53.5" total height  
23 links  
Links are detachable  
Weighted bottom  
Attaches to bottom of worksurface



## Trough

Cable management undermount tray



**\$29**

MODEL # TROUGH-BLK

Mounts to most flat surfaces  
18.0" troughs - set of two  
Mounts using heavy duty double sided tape and/or provided screws  
The image above shows one piece of the set



Visit our website for additional specs, dimensional drawings, alternative images and more resources for all of ESI's products.

# Power solutions

Position the power where you need it. Worksurfaces get a charge with the FlexCharge series, while workstations can be wired with the Railway series. Flexible mounting options make these adaptable for any workspace including individual workstations, conference rooms, collaborative spaces, and benching environments.



Product shown: (Left) FlexCharge9; (Right) FlexCharge4



## FlexCharge™4

Personal desktop power

**\$219**

MODEL # FCH4-DSK-\_\_\_



### Available finishes

☐ White -WHT

☒ Black -BLK

### Quick reach

Puts power within reach for any individual desk or benching environment

### Charging

Includes two quick-charge USB-A ports for powering up phones, tablets or other devices, as well as two AC outlets

Can be mounted in a 2.0" grommet or with included clamp  
8.0' power cord

Built-in surge protection



## FlexCharge™9

Tabletop power pod

**\$275**

MODEL # FCH9-POD-\_\_\_



### Available finishes

☐ White -WHT

☒ Black -BLK

☐ Pink -PNK

### Quick reach

Puts power within reach for any collaborative area or conference room

### Charging

Ideal for multiple users to charge up to nine devices at once with quick-charge USB-A ports and AC outlets

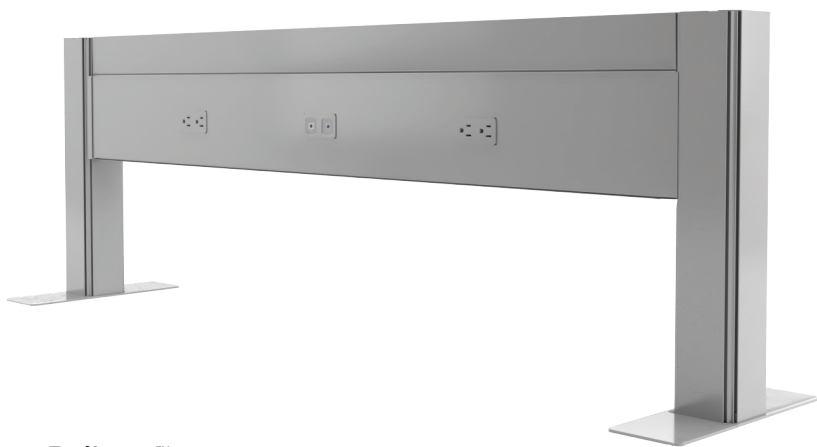
8.0' power cord

Built-in surge protection





Product shown: TriumphLX, Eppa2, Pixie LEDX, Solution 1CC, CPU01, Railway, FlexCharge4, Centro



## Railway™

Power and data solution

Please reference our *Railway Spec Guide*, contact the Customer Service Department or go to [esiergo.com](http://esiergo.com) for model #'s and pricing

### Open office solution

Optimizes open space with data and power rails with single and double sided options in four available widths

### Visually clean

Keeps all of the electrical and data wiring hidden inside the rail's simple design

Four available widths: 36", 48", 60", 72"

18.0"h x 3.3"w post

3.6"w x 12.0"d T foot (standard)

3.6"w x 7.8"d L foot (optional)

Up to eight 125V AC outlets per rail and four inputs for data

Specify base or ceiling feed

### Available finishes

- ☒ Silver -SLV  
48"/60" ships in 48 hrs.  
36"/72" LT
- ☒ Black -BLK  
All sizes LT
- ☐ White -WHT  
All sizes LT

Visit our website for additional specs, dimensional drawings, alternative images and more resources for all of ESI's products.

# Keyboard solutions

Increase your productivity with keyboard solutions. Each is easily modified to fit your preferences, and features built-in elements like tilt adjustment, palm rest, and glide track. From emails to spreadsheets, we'll make every keystroke comfortable.



*Product shown: All-Flex 3-leg, Evolve2-M, Solution Ultra, FlexCharge4, Conceal*





## Solution 1

### Solution 1CC

Keyboard platform combo

**\$335**

MODEL # SOLUTION 1

MODEL # SOLUTION 1CC



Recommended for straight edge worksurfaces (Solution 1) or diagonal corner worksurfaces (Solution 1CC)

25.0" keyboard platform, rectangle or cut corner

Spring assisted adjustment

17.0" glide track

Positions flush with worksurface

Available in R-Series\* (*cut corner only*)



## Solution 2

### Solution 2CC

Keyboard platform combo

**\$433**

MODEL # SOLUTION 2

MODEL # SOLUTION 2CC



Recommended for straight edge worksurfaces (Solution 2) or diagonal corner worksurfaces (Solution 2CC)

25.0" keyboard platform, rectangle or cut corner

Lift-and-lock adjustment

21.0" glide track

Positions flush with worksurface

Available in R-Series\* (*cut corner only*)



## Solution Ultra

Keyboard platform combo

**\$489**

MODEL # SOLUTION ULTRA



Recommended for radius corner worksurfaces

18.8" keyboard platform with 9.3" switch-and-click mousing platform

Lift-and-lock adjustment

21.0" glide track

Positions flush with worksurface



## Solution 6

### Solution 6CC

Keyboard platform combo

**\$458**

MODEL # SOLUTION 6

MODEL # SOLUTION 6CC



Recommended for straight edge worksurfaces (Solution 6) or diagonal corner worksurfaces (Solution 6CC)

27.0" keyboard platform, rectangle or cut corner

Lift-and-lock and dial-a-tilt adjustment

21.8" glide track

Positions flush with worksurface

\*R-Series platforms are composed of 100% post-consumer materials, making them completely recyclable. They are free of formaldehydes and carcinogens and emit no VOC's (Volatile Organic Compounds).

Visit our website for additional specs, dimensional drawings, alternative images and more resources for all of ESI's products.

# Lighting

Shine your light exactly where you want it with desktop task lighting and under cabinet lighting. Lights feature dimming options, occupancy sensors, and other energy and convenience features. Plus, workspace lighting provides flexible tilt and rotation so you can brighten your workspace and bring on the workday.



Product shown: Lustre, FlexCharge4





### Pixie-LED

Small profile task light

**\$182**

MODEL # PIXIE-LED-\_\_ \_\_



LED

3000 K color temperature

50,000 hrs. lamp life

7.0' power cord

11.8" arm reach



### Vivid-X

Single arm LED task light

**\$407**

MODEL # VIVID-X-SLV



LED

4100 K color temperature

50,000 hrs. lamp life

8 hr. auto shut-off

Built-in dimmer

6.0' power cord

21.0" arm reach



### Vivid-LEX

Two arm LED task light

**\$424**

MODEL # VIVID-LEX-SLV



LED

4100 K color temperature

50,000 hrs. lamp life

8 hr. auto shut-off

Built-in dimmer

6.0' power cord

36.0" arm reach



### Lustre

Telescoping LED task light

**\$627**

MODEL # LUSTRE-\_\_ \_\_



Available finishes

● Silver -SLV

○ White -WHT

LED

3500 K color temperature

50,000 hrs. lamp life

Occupancy sensor

8 hr. auto shut-off

Built-in dimmer

12.0' power cord

USB-A charging port

Telescoping arm reach

Visit our website for additional specs, dimensional drawings, alternative images and more resources for all of ESI's products.

# esi

## Healthcare Solutions

**ESI office and showroom**  
4030 East Quenton Drive  
Mesa, Arizona 85215

**Denver showroom**  
1825 Lawrence Street  
Suite 111  
Denver, Colorado 80202

**Fellowes Brands® headquarters**  
1789 Norwood Avenue  
Itasca, Illinois 60143

**Chicago showroom**  
theMART Showroom 11-101  
222 West Merchandise Mart Plaza  
Chicago, Illinois 60654

**Pittsburgh showroom**  
4303 Butler Street  
Pittsburgh, Pennsylvania 15201

**Online**  
Toll Free: 800.833.3746  
customerservice@esiergo.com

**Fellowes**  
Brands.

FAMILY BUSINESS  
SINCE 1917

