

Evolve2-F

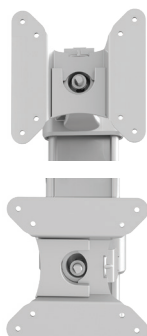
dual fixed monitor arm

Evolve2-F

dual fixed monitor arm



cable management



landscape/portrait rotation



grommet mount



desk clamp



VESA quick release



integrated allen key storage

Product specs

- Manual height adjustment
- Recommended for worksurfaces 24.0"–36.0" deep
- 16.3" arm extension
- 4.0" arm retraction
- +90°/-25° tilt
- ±90° rotation
- 0.0 lbs.–20.0 lbs. weight capacity (*per arm*)
- 18.0" pole height
- VESA quick release
- 180° lock-out feature
- Desk clamp and grommet mount included
- 28.0" max. monitor width (*bezel measured left to right*)
- Exceeds BIFMA x5.5 requirements
- Warranty 15 yr.



Model

List price

<input type="radio"/> EVOLVE2-F-SLV	\$520
<input checked="" type="radio"/> EVOLVE2-F-BLK	\$520
<input type="radio"/> EVOLVE2-F-WHT	\$520

Evolve monitor arm key

F - Fixed monitor arm

M - Motion monitor arm

S - Slider mount

Evolve for every need

- As workstation needs change, so can the Evolve configurations. Additional components sold separately.
- Benching system mount(s) available.

Call our Customer Service Department for compatibility and pricing for custom configurations.

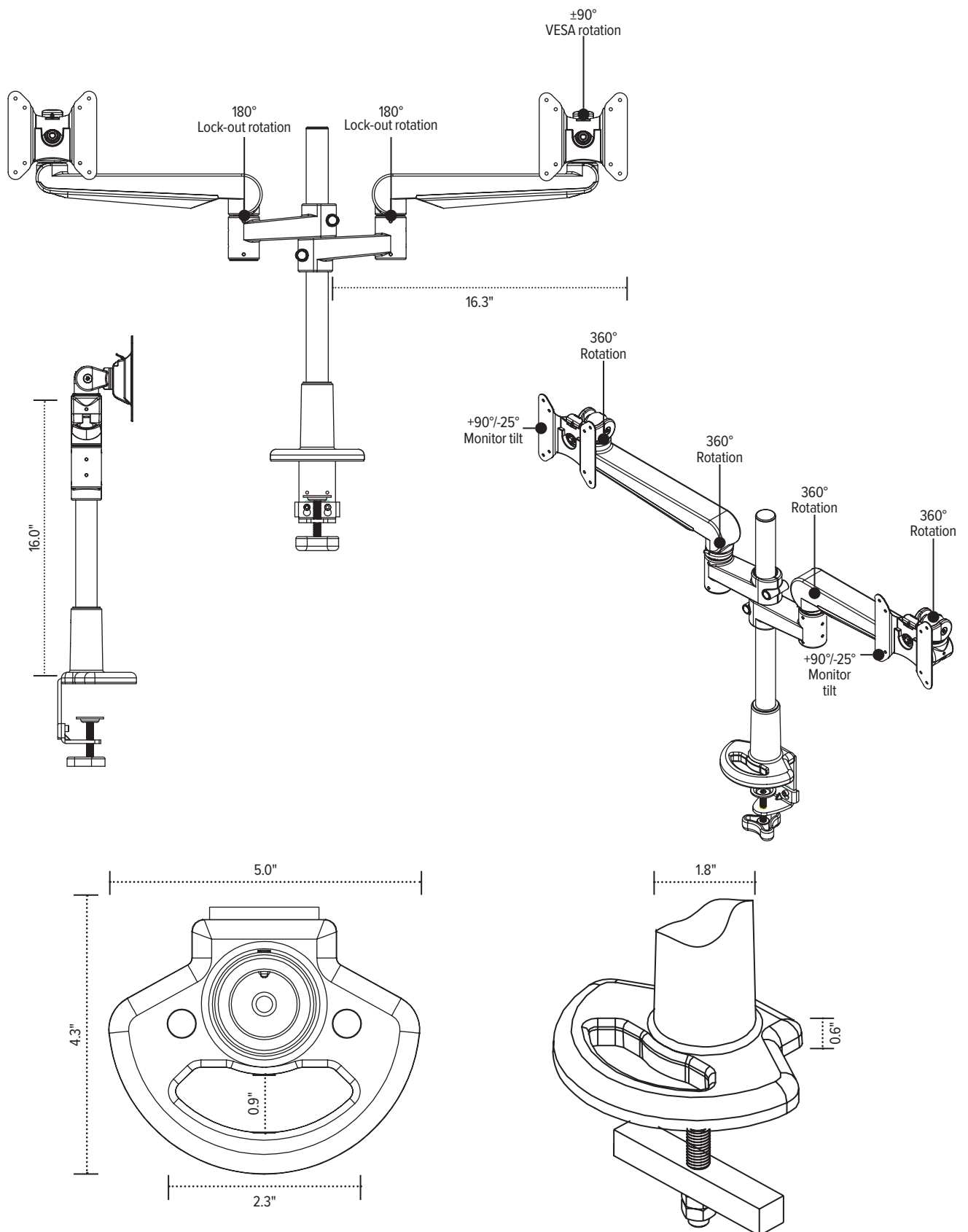
esi

800.833.3746
esiergo.com



Evolve2-F

dual fixed monitor arm



esi

800.833.3746
esiergo.com