



# Kata™ EX6-FMS

Six fixed + motion + slider monitor arm

# KataEX6-FMS

Dix fixed + motion + slider monitor arm



tension adjustment



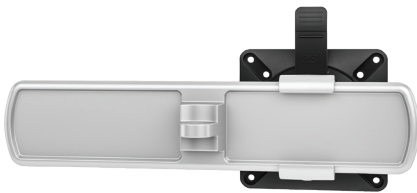
integrated tool storage



grommet mount



desk clamp



slider mount



connection sleeve

## Product specs

- Finger touch dynamic height adjustment
- Recommended for worksurfaces 30.0" deep or less
- 33.4" outside arm extension
- 11.1" center arm extension
- 6.6" arm retraction
- +90°/-45° monitor tilt (*slider & standard mounts*)
- ±90° VESA rotation
- Up to 20.0 lb. weight capacity (*per center arm*)
- 2.5 lb.–18.5 lb. weight capacity (*per outside arm*)
- 28.0" pole height (*includes base*)
- VESA 75mm/100mm quick release
- 180° lock-out feature
- Desk clamp mount only
- Slider provide 9.5" of additional horizontal adjustability
- Tension adjustment indicator for precision installation
- Each connection sleeve can accommodate up to three monitors depending on the configuration
- Partially assembled for quick installation
- Integrated cord management
- Integrated tool holder
- Meets or exceeds ANSI/BIFMA x5.5 guidelines
- 28.5" max. monitor width  
*Bezel measured left to right.*  
*Max. width is contingent on weight capacity.*  
*Note: monitor height/weight might limit size*
- Designed for ESI by Roger Webb Associates of London
- Warranty: 15 yr.

## Model #

- ☐ KATAEX6-DC-FMS-SLV
- ☒ KATAEX6-DC-FMS-BLK
- ☐ KATAEX6-DC-FMS-WHT

## KataEX monitor arm key

F - Fixed monitor arm  
M - Motion monitor arm  
S - Slider mount

## Available mounting options

DC - Desk clamp  
GM - Grommet mount

## KataEX for every need

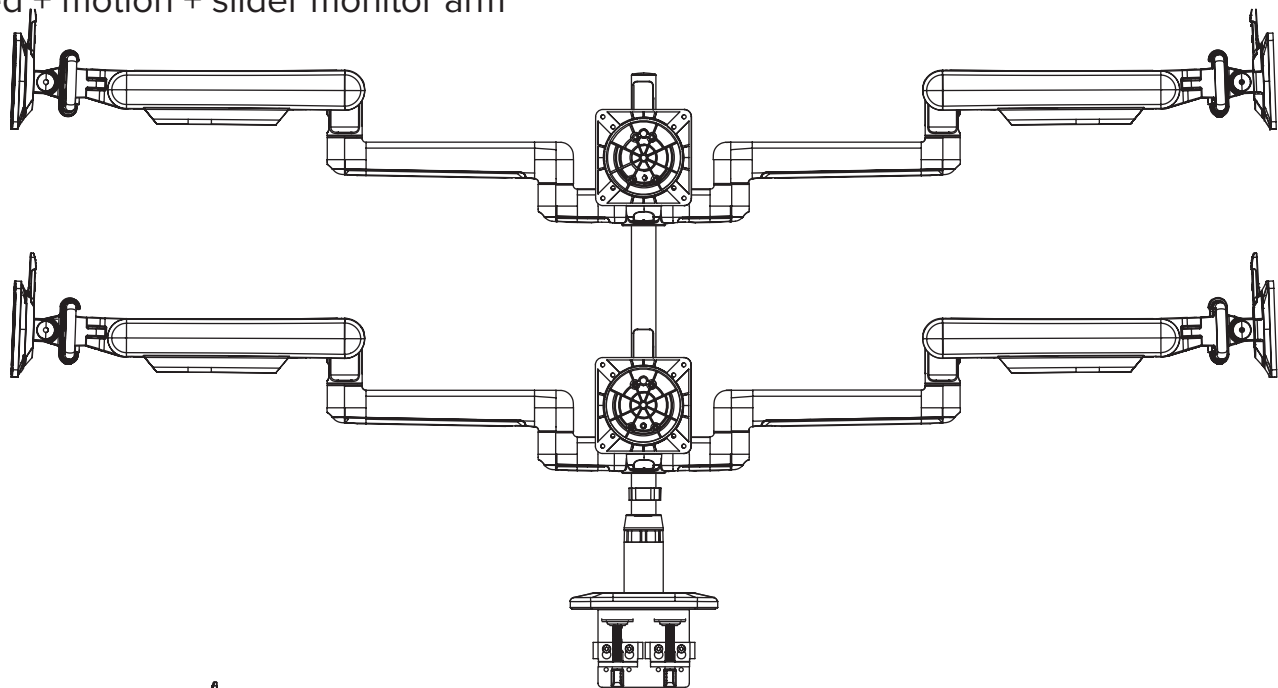
- As workstation needs change, so can the KataEX configurations. Additional components sold separately
- Benching system mount(s) available

*Call our Customer Service Department for compatibility and pricing for custom configurations.*

# KataEX6-FMS



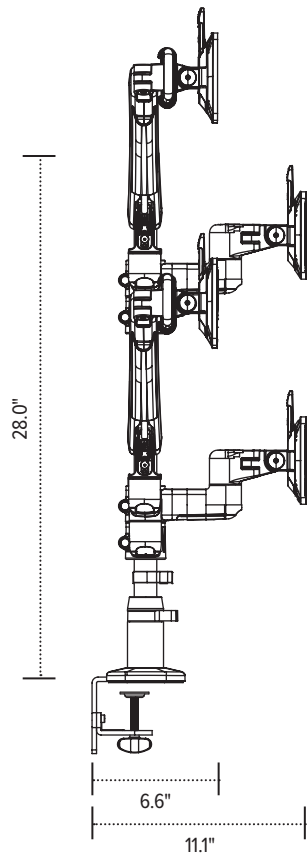
Dix fixed + motion + slider monitor arm



Base

Base

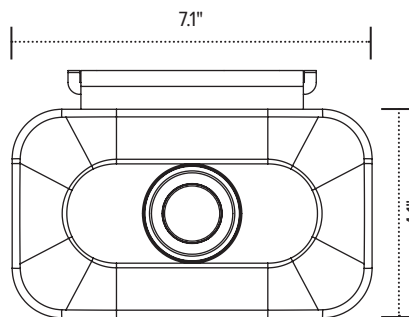
33.4"



28.0"

6.6"

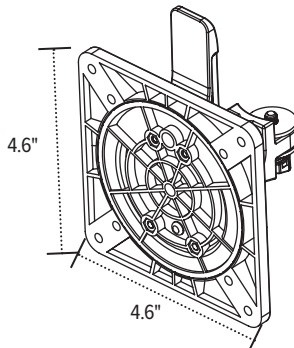
11.1"



7.1"

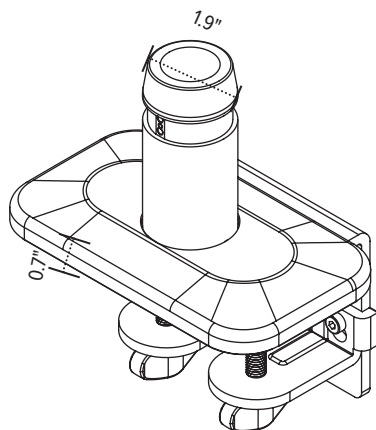
4.1"

VESA plate



4.6"

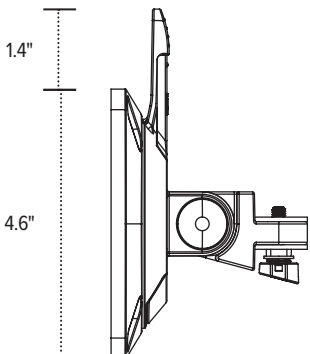
4.6"



1.9"

0.7"

VESA mount  
(profile view)



1.4"

4.6"

3.4"

**Fellowes**  
Brands.

FAMILY BUSINESS  
SINCE 1917