



esi®



Send™ EX2-MS

Dual motion + slider monitor arm

Sena™ EX2-MS

Dual motion + slider monitor arm

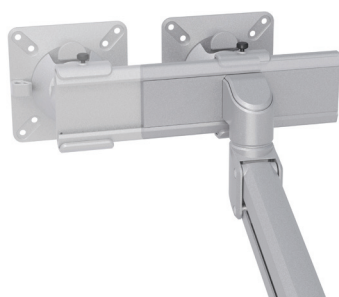
esi®



grommet mount



desk clamp



slider mount

Product specs

- Finger touch dynamic height adjustment
- Recommended for worksurfaces 36" deep or less
- 31.1" height adjustment range
 - 0.0"-31.1" (low/high)
- 17.6" arm extension
- 4.7" arm retraction
- +/-60° monitor tilt
- +/-90° VESA rotation
- 2.2lb. - 19.8lb weight capacity (per arm)
- 7.87" pole height (includes base)
- VESA 75mm/100mm quick release
- 180° lock-out feature
- 270° / 135° arm rotation with 180° lock out
- 40.4" max monitor width
 - Bezel measured left to right
 - Max width is contingent on weight capacity
- Desk clamp and grommet mount included
- Meets or exceeds BIFMA x5.5 and CSA CAN/CGSB44.227 guidelines
- Warranty: 15 yr

Model #	List price
<input type="radio"/> SENAEX2-MS-SLV	\$620
<input checked="" type="radio"/> SENAEX2-MS-BLK	\$620
<input type="radio"/> SENAEX2-MS-WHT	\$620

SenaEX monitor arm key Available mounting options

F - Fixed monitor arm	DC - Desk clamp
M - Motion monitor arm	GM - Grommet mount
S - Slider mount	

SenaEX for every need

- As workstation needs change, so can the SenaEX configurations. Additional components sold separately

Call our Customer Service Department for pricing for custom configurations.

Sena™ EX2-MS

Dual motion + slider monitor arm

esi®

