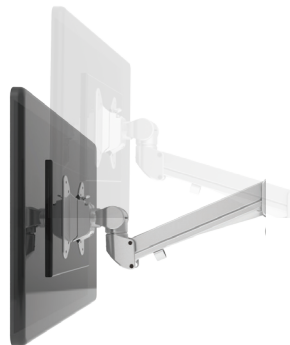


# Evolve6-FMS

Six fixed + motion + slider monitor arm

# Evolve6-FMS

Six fixed + motion + slider monitor arm



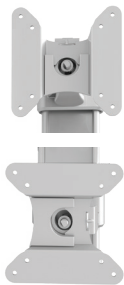
effortless  
adjustment



slider



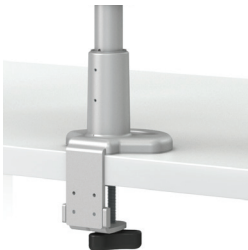
cable management



landscape/portrait  
rotation



grommet mount



desk clamp



integrated allen key  
storage



VESA quick release

## Product specs

- Finger touch dynamic height adjustment
- Recommended for worksurfaces 30.0" deep or less
- 31.4" outside arm extension
- 8.0" center arm extension
- 6.7" arm retraction
- +80°/-60° monitor tilt (*slider mount*)
- +90°/-25° monitor tilt (*center mount*)
- ±90° VESA rotation
- Up to 20.0lb. weight capacity (*per center arm*)  
4.4lb.-15.4lb. weight capacity (*per outside arm*)
- 30.0" pole height (*includes base*)
- VESA 75mm/100mm quick release
- 180° lock-out feature
- Desk clamp and grommet mount included
- 24.5" max. monitor width  
*Bezel measured left to right.*  
*Max. width is contingent on weight capacity.*  
*Note: monitor height/weight might limit size.*
- Slider provides 8.5" of additional horizontal adjustability
- Patented slider design for exclusive ESI use
- Meets or exceeds BIFMA x5.5 and  
CSA CAN/CGSB44.227 guidelines
- Warranty: 15 yr.



Model #	List price
<input type="radio"/> EVOLVE6-FMS-SLV	\$2,029
<input checked="" type="radio"/> EVOLVE6-FMS-BLK	\$2,029
<input type="radio"/> EVOLVE6-FMS-WHT	\$2,029

## Evolve monitor arm key

F - Fixed monitor arm

M - Motion monitor arm

S - Slider mount

## Evolve for every need

- As workstation needs change, so can the Evolve configurations. Additional components sold separately
- Benching system mount(s) available

Call our Customer Service Department for compatibility and pricing for custom configurations.

# Evolve6-FMS

Six fixed + motion + slider monitor arm

