



# Evolve1-F

Single fixed monitor arm

V35 - Pricing effective 6/1/2021

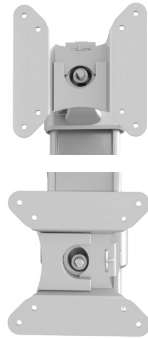


# Evolve1-F

Single fixed monitor arm



cable management



landscape/portrait rotation



grommet mount



desk clamp



VESA quick release



integrated allen key storage

## Product specs

- Manual height adjustment
- Recommended for worksurfaces 30.0" deep or less
- 18.2" arm extension
- 4.1" arm retraction
- +90°/-25° monitor tilt
- ±90° VESA rotation
- Up to 20.0 lb. weight capacity
- 18.0" pole height (includes base)
- VESA 75mm/100mm quick release
- 180° lock-out feature
- Desk clamp and grommet mount included
- Meets or exceeds BIFMA x5.5 and CSA CAN/CGSB44.227 guidelines
- Warranty 15 yr.



## Model #

## List price

<input type="radio"/> EVOLVE1-F-SLV	\$343
<input checked="" type="radio"/> EVOLVE1-F-BLK	\$343
<input type="radio"/> EVOLVE1-F-WHT	\$343

## Evolve monitor arm key

F - Fixed monitor arm

M - Motion monitor arm

S - Slider mount

## Evolve for every need

- As workstation needs change, so can the Evolve configurations. Additional components sold separately
- Benching system mount(s) available

Call our Customer Service Department for compatibility and pricing for custom configurations.

# Evolve1-F

Single fixed monitor arm

esi®

