



Evolve4-FMS

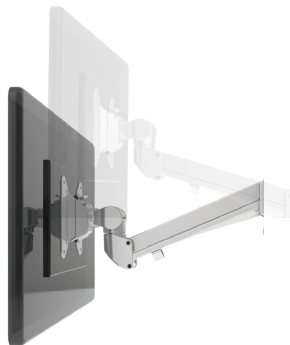
Quad fixed + motion + slider monitor arm

Evolve4-FMS

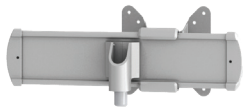
Quad fixed + motion + slider monitor arm



esi



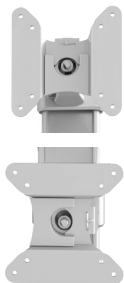
effortless
adjustment



slider



cable management



landscape/portrait
rotation



grommet mount



desk clamp



integrated allen key
storage



VESA quick release

Product specs

- Finger touch dynamic height adjustment
- Recommended for worksurfaces 36.0" deep or less
- 31.4" arm extension
- 6.7" arm retraction
- +80°/-60° monitor tilt
- ±90° VESA rotation
- 4.4lb.–15.4lb. weight capacity (*per arm*)
- 30.0" pole height (*includes base*)
- VESA 75mm/100mm quick release
- 180° lock-out feature
- Desk clamp and grommet mount included
- 32.0" max. monitor width
Bezel measured left to right.
Max. width is contingent on weight capacity.
Note: monitor height/weight might limit size.
- Slider provides 8.5" of additional horizontal adjustability
- Patented slider design for exclusive ESI use
- Meets or exceeds BIFMA x5.5 and CSA CAN/CGSB44.227 guidelines
- Warranty: 15 yr.



Model #	List price
<input type="radio"/> EVOLVE4-FMS-SLV	\$1,750
<input checked="" type="radio"/> EVOLVE4-FMS-BLK	\$1,750
<input type="radio"/> EVOLVE4-FMS-WHT	\$1,750

Evolve monitor arm key

F - Fixed monitor arm

M - Motion monitor arm

S - Slider mount

Evolve for every need

- As workstation needs change, so can the Evolve configurations. Additional components sold separately.
- Benching system mount(s) available.

Call our Customer Service Department for compatibility and pricing for custom configurations.

Evolve4-FMS



Quad fixed + motion + slider monitor arm

