



esi®



# Sena™ EX3-FMS

Triple fixed + motion + slider monitor arm

# Sena™ EX3-FMS

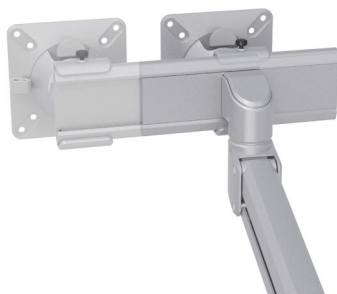
Triple fixed + motion + slider monitor arm



grommet mount



desk clamp



slider mount

## Product specs

- Finger touch dynamic height adjustment
- Recommended for worksurfaces 36" deep or less
- 15.7" height adjustment range
  - 5.0" - 20.6" (low/high)
- 30.1" arm extension
- 4.6" center arm extension
- 4.7" arm retraction
- +/-60° monitor tilt
- +/-90° VESA rotation
- 2.2lb. - 19.8lb weight capacity (per arm)
- 20.1" pole height (includes base)
- VESA 75mm/100mm quick release
- 180° lock-out feature
- Desk clamp and grommet mount included
- Integrated cord management
- 270° / 135° arm rotation with 180° lock out
- 30.9" max monitor width
  - Bezel measured left to right
  - Max width is contingent on weight capacity
- Meets or exceeds ANSI/BIFMA x5.5 guidelines
- Warranty: 15 yr

## Model #

- ☐ SENAEX3-FMS-SLV
- ☒ SENAEX3-FMS-BLK
- ☐ SENAEX3-FMS-WHT

## SenaEX monitor arm key Available mounting options

F - Fixed monitor arm	DC - Desk clamp
M - Motion monitor arm	GM - Grommet mount
S - Slider mount	

## SenaEX for every need

- As workstation needs change, so can the SenaEX configurations. Additional components sold separately

Call our Customer Service Department for pricing for custom configurations.

# Sena™ EX3-FMS

esi®

Triple fixed + motion + slider monitor arm

