

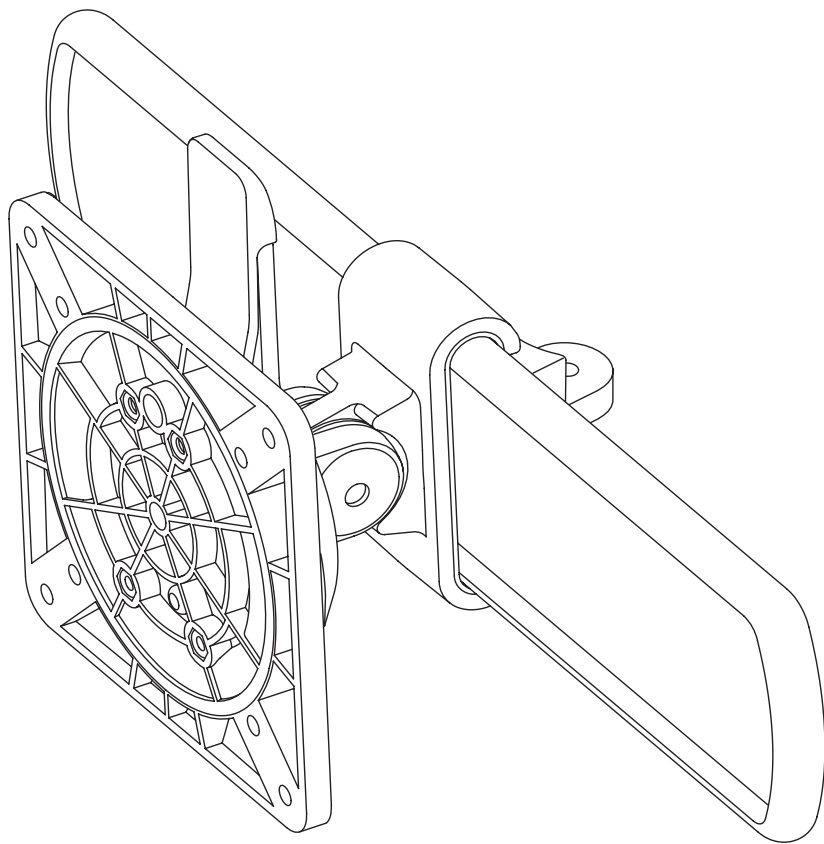


installation instructions

Kata™ slider mount

VESA slider retrofit

model KATA-SLD-SLV
model KATA-SLD-BLK
model KATA-SLD-WHT



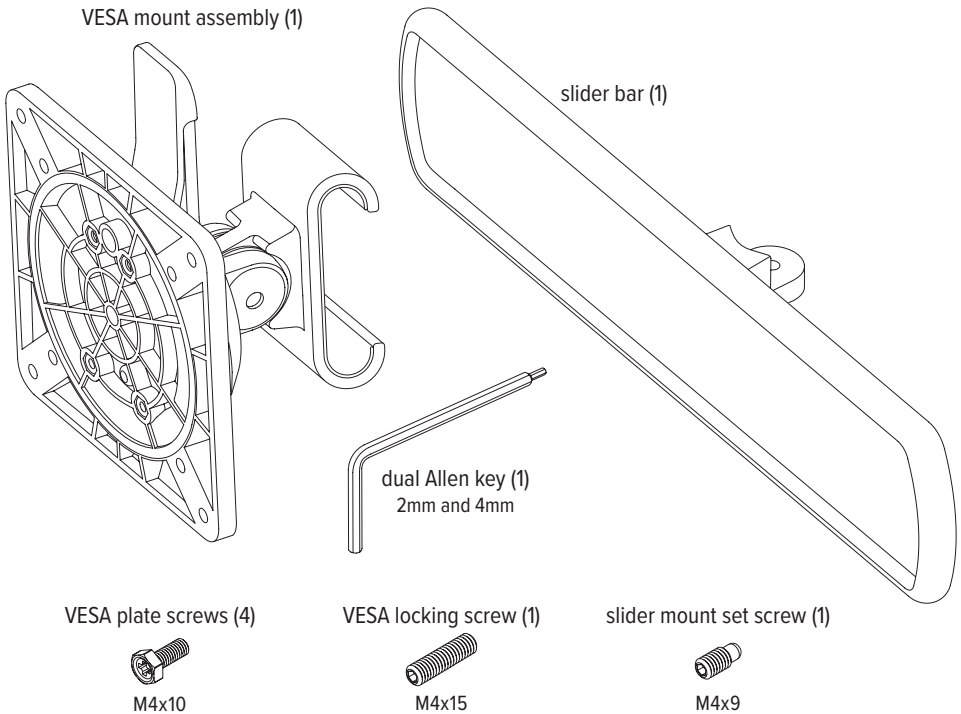


caution

- Hand tighten screws only. Do not use power tools.

Please review these instructions before beginning the installation. Use the illustrations below to check that all the components needed for your installation were provided with your order. Do not discard the packaging until the product works to your satisfaction.

components and tools



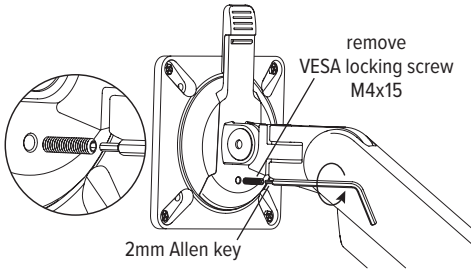
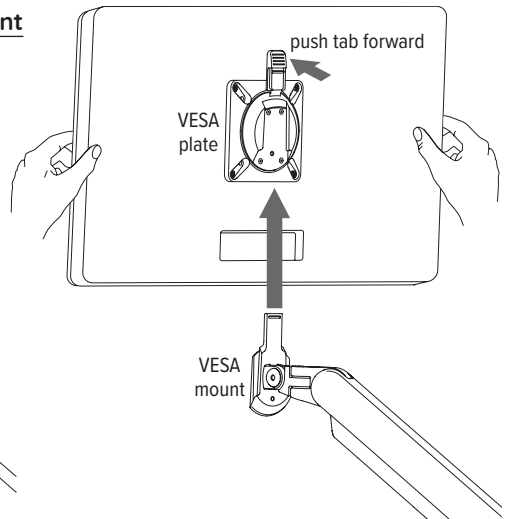
additional tools required

- Phillips screwdriver



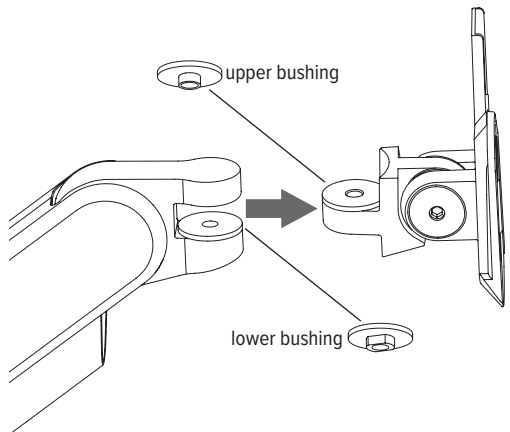
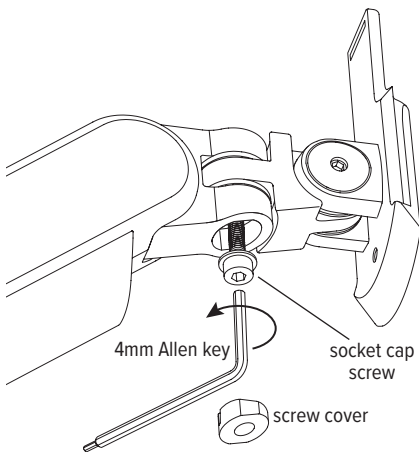
step 1: remove monitor from VESA mount

- Disconnect the monitor cables.
- If a VESA locking screw is installed, remove it using the 2mm Allen key, as shown below.
- Push forward the tab at the top of the VESA plate and lift the monitor upward.
- Place the monitor face down on a flat surface.



step 2: remove VESA mount from monitor arm

- Remove the socket cap screw cover from the underside of the monitor arm.
- Remove the socket cap screw using the 4mm Allen key.
- Pull the VESA mount from the monitor arm.
 - There are two bushings on which the VESA mount swivels, as shown in the right illustration. Remove the bushings and save them for re-use. [**Or:** You may re-use the bushings or use the new ones provided.]

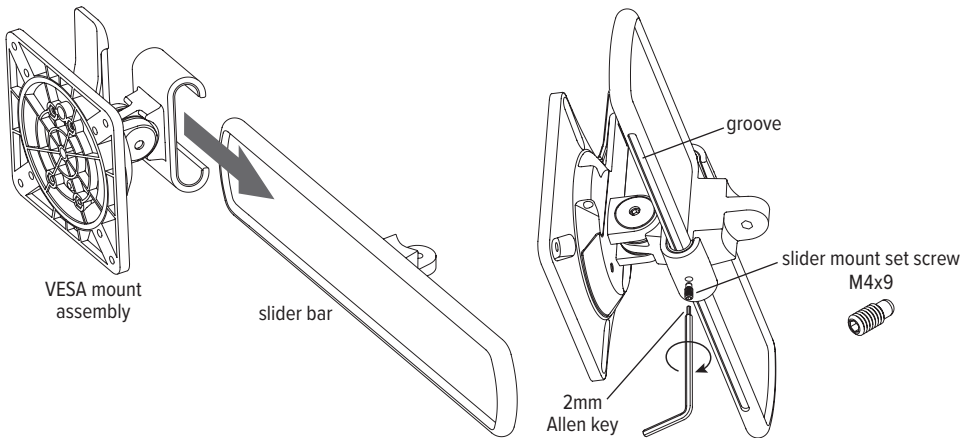




step 3: assemble slider mount

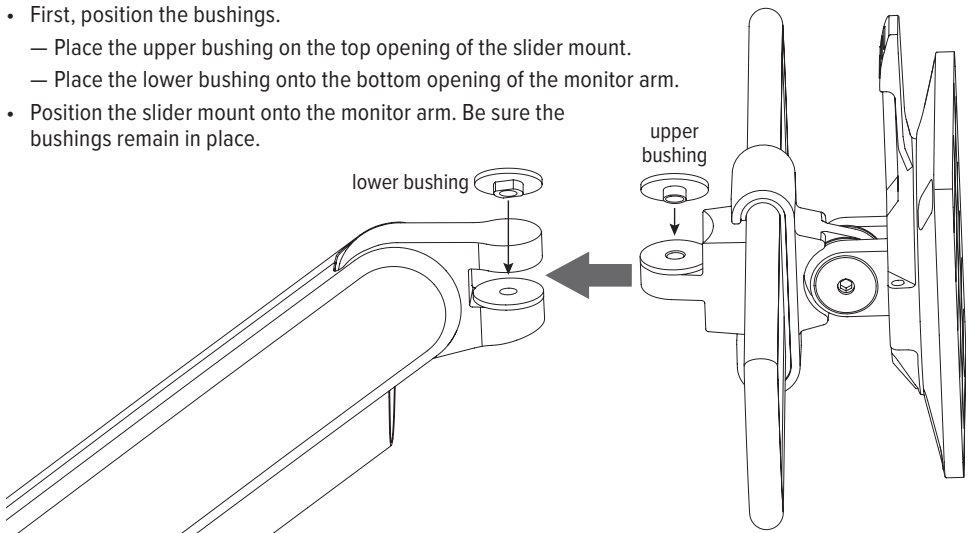
IMPORTANT: When assembling the slider mount, the groove on the slider bar must be at the bottom.

- Slide the VESA mount assembly onto the slider bar. Center the assembly on the slider bar.
- Install the M4x15 locking screw into the bottom of the VESA mount assembly. Using the 2mm Allen key, tighten the locking screw to hold the assembly in place. Be sure the screw fits into the groove.
 - After the monitor has been installed, the VESA mount can be moved anywhere along the slider bar by loosening the locking screw no more than one full turn, so that it stays inside the groove. Be sure to re-tighten the screw to secure the monitor in the desired position.



step 4: position slider mount on monitor arm

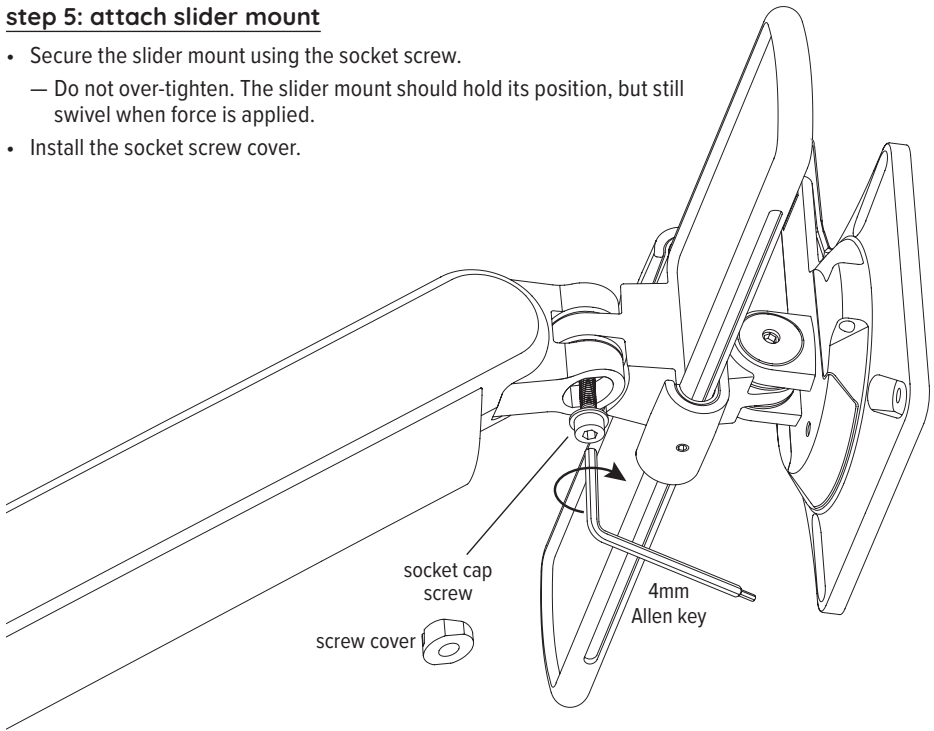
- First, position the bushings.
 - Place the upper bushing on the top opening of the slider mount.
 - Place the lower bushing onto the bottom opening of the monitor arm.
- Position the slider mount onto the monitor arm. Be sure the bushings remain in place.





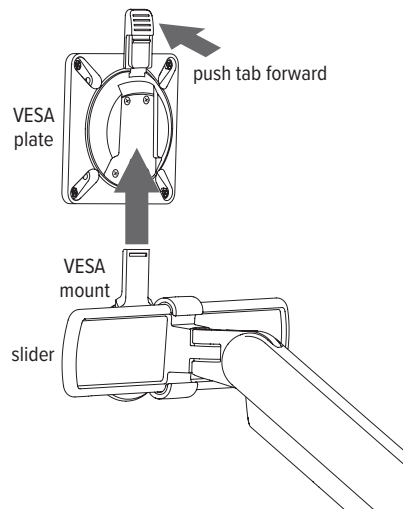
step 5: attach slider mount

- Secure the slider mount using the socket screw.
 - Do not over-tighten. The slider mount should hold its position, but still swivel when force is applied.
- Install the socket screw cover.



step 6: remove VESA plate from VESA mount

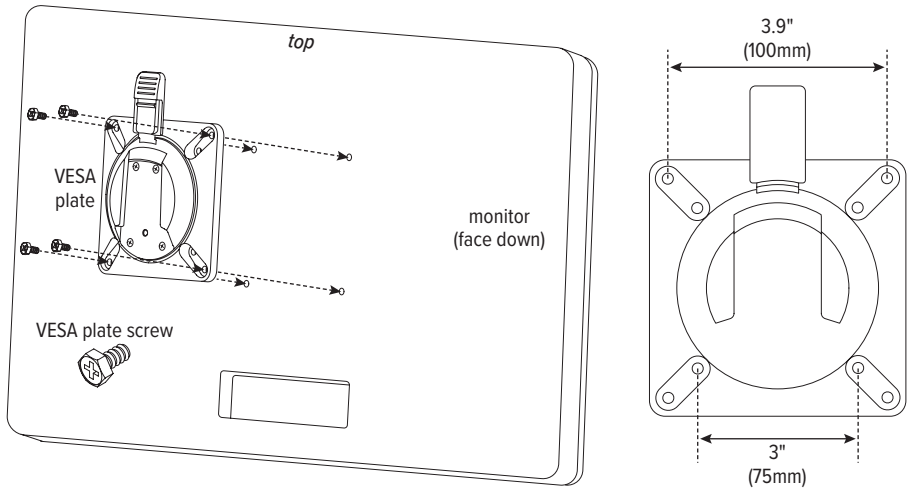
- Remove the VESA plate from the VESA mount by pushing forward the tab at the top and lifting upward.



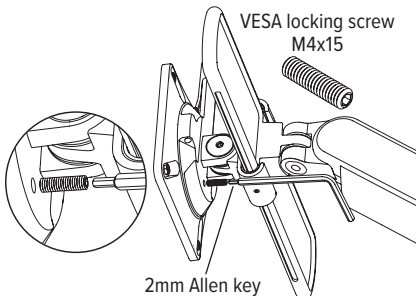
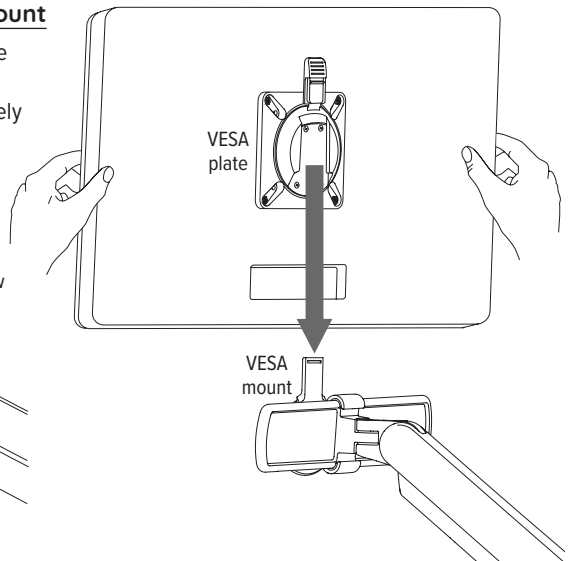
**step 7: only if not reattaching original monitor: attach VESA plate to new monitor**

Skip this step if you are using the original monitor.

- Place the monitor face down on a flat surface. Align the VESA plate holes with the holes on the back of the monitor. Attach the VESA plate using the four VESA plate screws provided.
 - There are two sets of four holes on the VESA plate. One set has holes 3.9" (100mm) apart, the other set has holes 3" (75mm) apart. Use the set that matches the holes on the rear of the monitor.

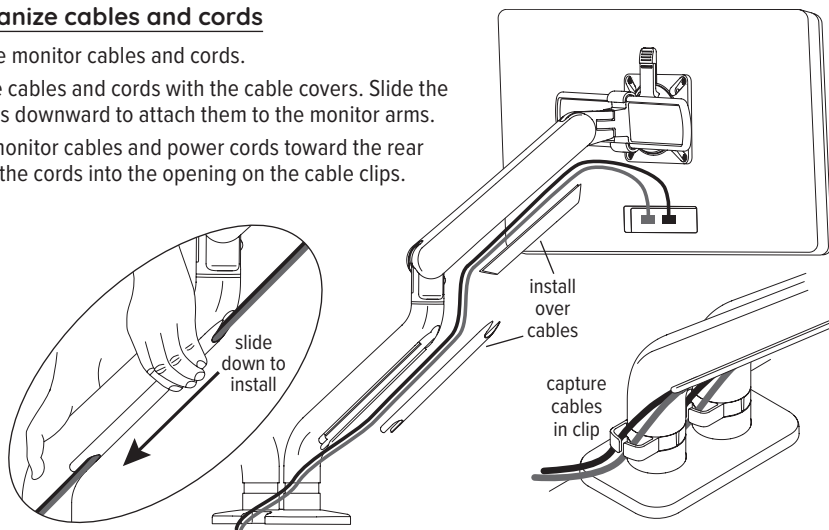
**step 8: attach monitor to VESA mount**

- Slide the VESA plate and monitor onto the VESA mount.
 - Make sure the VESA plate clicks securely in place.
- **OPTIONAL:** Secure the VESA plate to the VESA mount using the M4x15 VESA locking screw, as shown below.

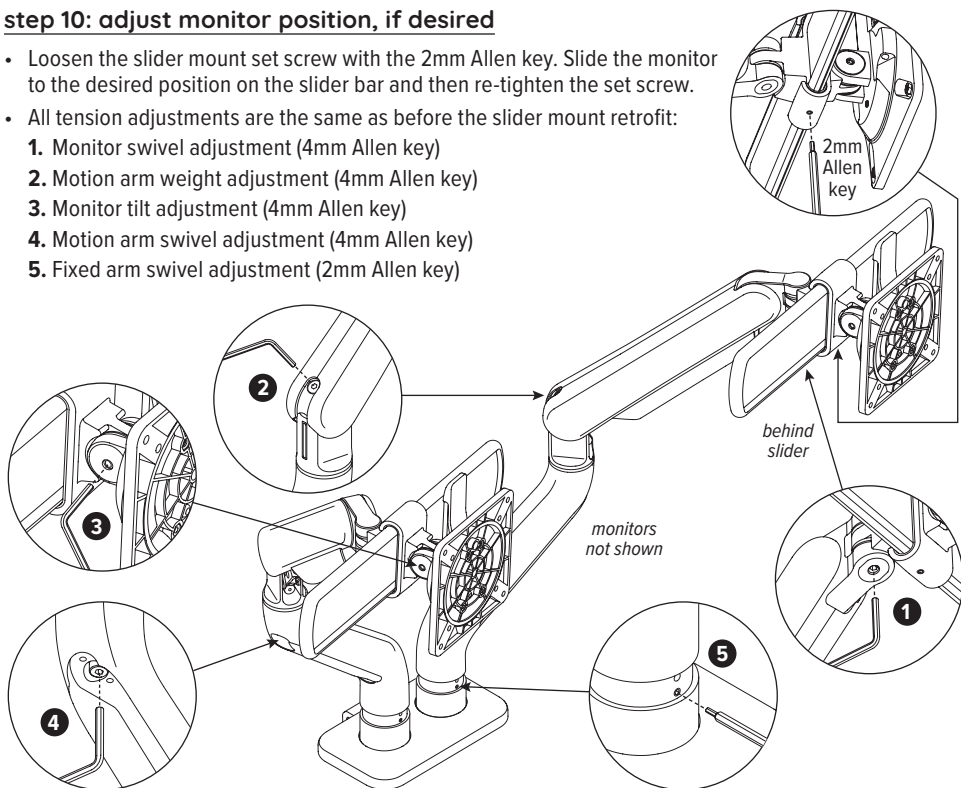


**step 9: organize cables and cords**

- Connect the monitor cables and cords.
- Capture the cables and cords with the cable covers. Slide the cable covers downward to attach them to the monitor arms.
- Route the monitor cables and power cords toward the rear by slipping the cords into the opening on the cable clips.

**step 10: adjust monitor position, if desired**

- Loosen the slider mount set screw with the 2mm Allen key. Slide the monitor to the desired position on the slider bar and then re-tighten the set screw.
- All tension adjustments are the same as before the slider mount retrofit:
 1. Monitor swivel adjustment (4mm Allen key)
 2. Motion arm weight adjustment (4mm Allen key)
 3. Monitor tilt adjustment (4mm Allen key)
 4. Motion arm swivel adjustment (4mm Allen key)
 5. Fixed arm swivel adjustment (2mm Allen key)





Kata slider mount

VESA slider retrofit

Please contact Customer Service with any questions or comments at 800.833.3746 or visit our website at esiergo.com

LIMITED WARRANTY

ESI warrants this product to be free from defects in manufacturing for a period of 15 years from the date of original purchase. This warranty extends only to the original purchaser, and does not apply if the product has been damaged or fails to function properly as a result of misuse, abuse, modification, alteration, or improper cleaning or maintenance. This warranty does not apply to damage in shipment caused by carriers, damage caused during installation, normal wear and tear, or excessive use (meaning consistent use in excess of an eight hour shift). ANY IMPLIED WARRANTIES OF MERCHANTABILITY OR FITNESS FOR A PARTICULAR PURPOSE ARE LIMITED IN DURATION TO ONE YEAR FROM THE DATE OF ORIGINAL RETAIL PURCHASE. ESI's sole obligation under this warranty or any implied warranty, and the purchaser's sole remedy, is limited to the repair or replacement, at ESI's option, of the product or any defective part. Costs (such as installation, labor fees or express shipping) incurred due to replacement of products are not covered under warranty. IN NO EVENT SHALL FELLOWES, ITS AFFILIATES, SUBSIDIARIES, RELATED ENTITIES OR THEIR RESPECTIVE OFFICERS, DIRECTORS, OR EMPLOYEES, BE LIABLE FOR INCIDENTAL, CONSEQUENTIAL, PUNITIVE, EXEMPLARY, OR SPECIAL DAMAGES.

To make a warranty claim, contact ESI at 800-833-3746 or customerservice@esiergo.com. You must provide proof of purchase, such as the original purchase order number.

The duration, terms and conditions of this warranty are valid worldwide, except where different limitations, restrictions or conditions may be required by local law.