



# Kata™ EX1-MS

Single motion + slider monitor arm

# KataEX1-MS

Single motion + slider monitor arm



tension adjustment



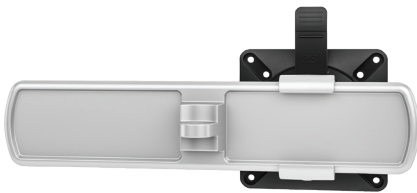
integrated tool storage



grommet mount



desk clamp



slider mount



connection sleeve

## Product specs

- Finger touch dynamic height adjustment
- Recommended for worksurfaces 30.0" deep or less
- 20.33" arm extension
- 3.95" arm retraction
- +90°/-45° monitor tilt
- ±90° VESA rotation
- 2.5 lb.–18.5 lb. weight capacity
- 15.99" pole height (*includes base*)
- VESA 75mm/100mm quick release
- 180° lock-out feature
- Specify a grommet mount or a desk clamp mount
- Slider provides 9.5" of additional horizontal adjustability
- Tension adjustment indicator for precision installation
- Each connection sleeve can accommodate up to three monitors depending on the configuration
- Partially assembled for quick installation
- Integrated cord management
- Integrated tool holder
- Meets or exceeds ANSI/BIFMA x5.5 guidelines
- Designed for ESI by Roger Webb Associates of London
- Warranty: 15 yr.

## Model #

- ☐ KATAEX1-DC-MS-SLV
- ☒ KATAEX1-DC-MS-BLK
- ☐ KATAEX1-DC-MS-WHT
- ☐ KATAEX1-GM-MS-SLV
- ☒ KATAEX1-GM-MS-BLK
- ☐ KATAEX1-GM-MS-WHT

## KataEX monitor arm key

- F - Fixed monitor arm
- M - Motion monitor arm
- S - Slider mount

## Available mounting options

- DC - Desk clamp
- GM - Grommet mount

## KataEX for every need

- As workstation needs change, so can the KataEX configurations. Additional components sold separately
- Benching system mount(s) available

Call our Customer Service Department for compatibility and pricing for custom configurations.

# KataEX1-MS

Single motion + slider monitor arm

